



2025

Product Catalog

Volume 2

Content

About Luminys

Luminys Systems Corporation	6
MVP Program	7
Our Technologies	8
Product Naming Conventions	16

LumiCloud

Video	26
Access	28
Switches	30

LumiCenter	32
------------	----

Network Cameras	39
-----------------	----

Network Video Recorder	59
------------------------	----

Access Control	66
----------------	----

Transmission	70
--------------	----

Accessories	73
-------------	----

LumiGuardian	79
--------------	----

Luminys Tools - Streamlined Support for Every Project Stage

From product selection to system management, our tools save you time and boost productivity. Central to this is the Lumi Wiki, your go-to resource for product manuals, guides, and firmware updates, ensuring you have the information needed for smooth operations.



Explore more about
our tools and their
capabilities at Lumi Wiki

Product Selector - Find and Compare

Access Detailed Product Information Find the perfect product with our Product Search bar by entering the first 1 to 3 characters of a model number or the product name. Visit us online and scan the QR Code for direct access: QR Code.

For more customized searches, use the Luminys Product Selector:

- [Cameras Selector](#): Tailored for various security needs.
- [Recorders Selector](#): Enhance your security systems.
- [Accessories Selector](#): Complement your setup.
- [Software Selector](#): Control your system with powerful software.



Access Detailed Product
Information Here

Learn Lumi: Empower. Innovate. Excel.

Master essential skills with our targeted training and certification, designed to enhance expertise and support professional growth.



For quick access to our
training materials, scan the
QR code to visit Learn Lumi

Luminys Systems Corporation



Rigorous Compliance



Delivering Safe, Smart, and Sustainable Ecosystems



Mission:

To empower communities and customers with advanced, high-quality technology solutions, we uphold integrity, enhance security, and optimize operations. Our smart connected solutions deliver sustainable, safer, and symbiotic ecosystems.



Vision:

To be the connected ecosystem of solutions and services for a sustainable, secure world.

MVP Program

As an MVP partner, you are not just part of our network – you are at the heart of our mission to innovate, lead, and shape the future of our industry together.

Join us, and gain access to dynamic co-marketing initiatives, cutting-edge technical support, priority resources, and significant pricing advantages.

What Can We Do For You

- By becoming an MVP partner, you unlock a pathway to growth through exclusive benefits, robust support, and unique opportunities that drive profitability.
- Our program is structured with four distinct tiers, each offering increasing advantages tailored to your achievements and commitment.
- Whether you're just starting your journey or aiming to elevate your business to the highest level, the MVP Program provides everything you need to succeed.



Partner





Executive



Ambassador



Elite

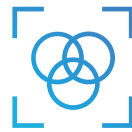
Core Requirements				
*Certification/Certification training objectives	None	None	1 Sales Certification & 1 Technical Certification	2 Sales Certification & 2 Technical Certification
Core Benefits				
Over the Counter Exchange	✓	✓	✓	✓
Project Registration *Over \$10,000 MSRP	✓	✓	✓	✓
Co-Marketing		✓	✓	✓
Online Certification Courses	✓	✓	✓	✓
Dealer Portal	✓	✓	✓	✓
Dedicated Account Manager	✓	✓	✓	✓
Tech Support/ Dedicated Project Technical Support		Dedicated Project Technical Support	Dedicated Project Technical Support	Dedicated Project Technical Support
Tech Support/ Email Response	Email Response within 24 hours	Email Response within 24 hours	Email Response within 12 hours	Email Response within 12 hours
Tech Support Line	General Line	General Line	Priority Line	Priority Line
Partner Care Program		✓	✓	✓
Lead Generation		✓	✓	✓
Technical Consultant		✓	✓	✓
MVP Summit*			Eligible for 2 people**	Eligible for 2 people**
LumiCloud Access	✓	✓	✓	✓
Exclusive Nomination Opportunity			 Dealer Advisory Nomination	 Dealer Advisory Nomination

*This requirement will be mandatory in the future once the certification training program is launched.

*Stay up-to-date with our demo purchase program. Our partners have the opportunity to purchase demo products at a discounted rate each year based on tier level.

Our Technologies

Low-light Technologies



LumiLuxSmart

Designed with 3 Flexible Modes.

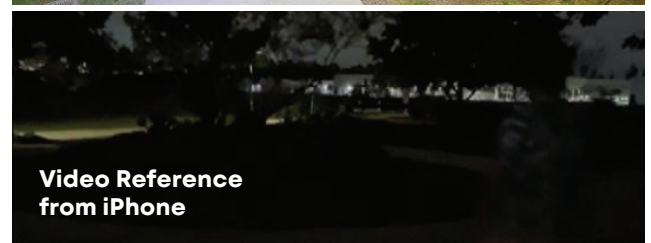
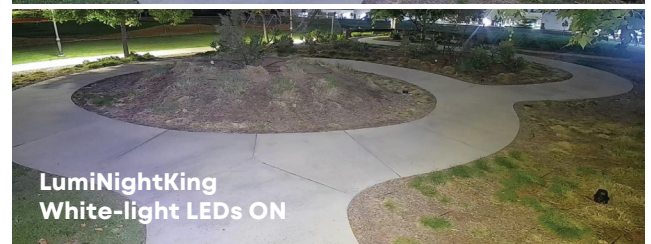
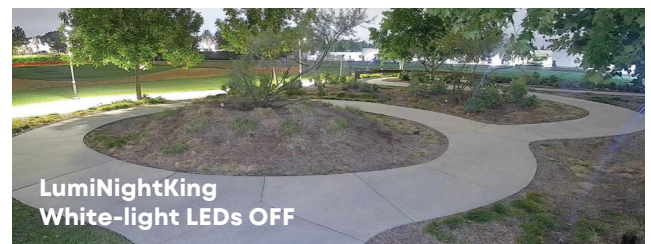
LumiLuxSmart technology features dual-illumination to deliver full-color security in near-dark environments. It offers three versatile modes to suit any application: IR only, dusk-to-dawn white-light LEDs only, and motion-activated dual-illumination for full-color video. **Available on N5-L and N3-L Series fixed cameras.**



LumiNightKing

Made for Color. Specialized for Covertness or Deterrence.

LumiNightKing technology provides flexible and reliable full-color video in near-dark conditions. These cameras support two modes: covert monitoring with no LEDs or dusk-to-dawn white-light LEDs for deterrent monitoring. **Available on N4 fixed and P3-N PTZ cameras.**





LumiLightBand

Express Your Presence.

LumiLightBand technology features a vibrant front-facing light strip designed to ensure the camera's presence is clearly visible. The light strip can be activated on a preset schedule or in response to event triggers. With eight attention-grabbing color options, the illuminating LEDs can be configured to remain steady, wave, or flash for a specified duration. **Available on N3-B fixed and K8-B kits.**

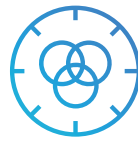


LumiDeterrent

Powerful Prevention.

LumiDeterrent technology integrates full-color low-light imaging with advanced proactive deterrence features, including customizable audio alerts, red and blue warning lights, and dual-illumination. It supports three operational modes—infrared, dusk-to-dawn white-light LEDs for continuous deterrent monitoring, and motion-activated lighting. Brightness levels are remotely adjustable to minimize light pollution and optimize visibility for different environments. **Available on N5-D fixed and P5-D and P4-D PTZs.**





LumiColor

Engineered for Continuous Color.

LumiColor technology features dusk-to-dawn white-light LEDs to provide active deterrence and ambient illumination, delivering full-color security in near-dark environments. Once lighting is increased, the white-light LEDs turn off. **Available on N5-C Series fixed cameras.**

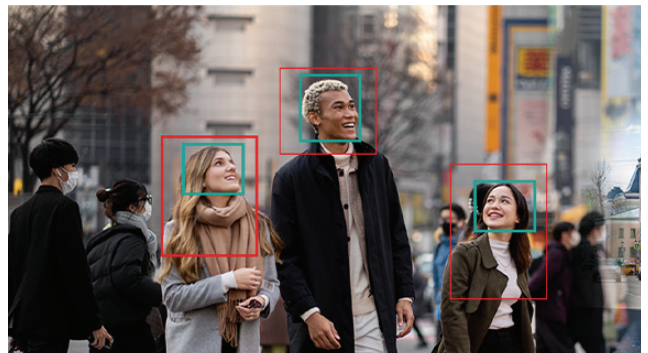
AI Technologies

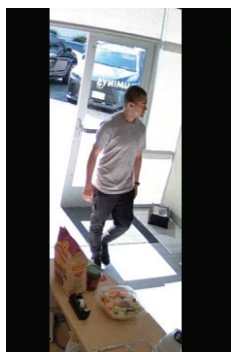
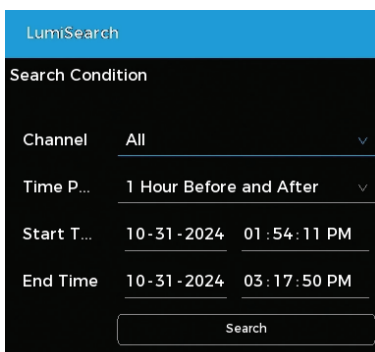


LumiAnalytics

Powered by Intelligence.

LumiAnalytics encompasses Face Detection, People Counting, Queue Management, Smart Object Detection, and Heat Mapping. These analytics utilize detailed metadata and advanced AI algorithms to track key metrics, including people counting and behavioral analysis. These insights provide businesses with highly valuable information to improve and optimize operations.

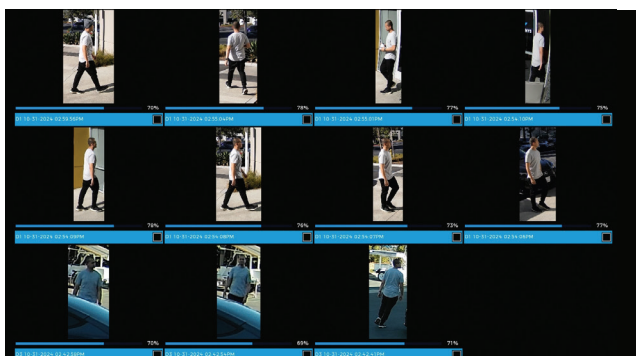




LumiSearch+

AI-driven. Finding Results Faster.

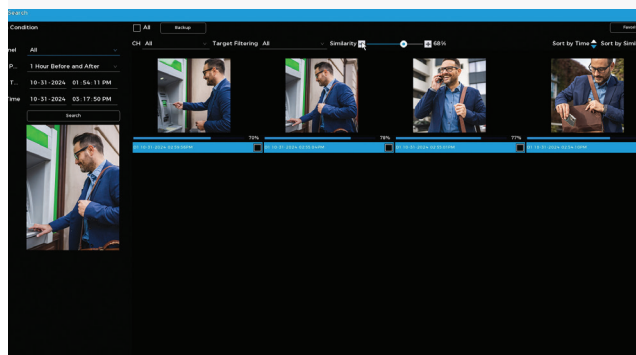
LumiSearch+ technology is an even faster way to find, track, and identify targets in recorded video using a reference image. The LumiSearch+ algorithm simultaneously uses both metadata and the search functionality to analyze human body shape, clothing color, and other characteristics to accurately pinpoint where a target has appeared in video captured by any LumiSearch+-enabled camera and NVR. **Availability: N5-L series cameras.**



LumiSearch

Optimized to Find Things Fast.

LumiSearch technology lets you quickly find, track, and identify targets in security video using a reference image. The LumiSearch algorithm analyzes human body shape, clothing color, and other characteristics to accurately pinpoint where a target has appeared in video captured by any LumiSearch-enabled camera and NVR. **Availability: P54-4DB25, N5-D, N5-C, and P5-S series cameras.**



Performance Technologies



LumiPolarPro

Arctic Dependable.

LumiPolarPro technology ensures rugged all-weather performance. Depending on the product model, LumiPolarPro enables dependable performance in -40 °C (-40 °F) or lower.

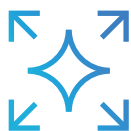
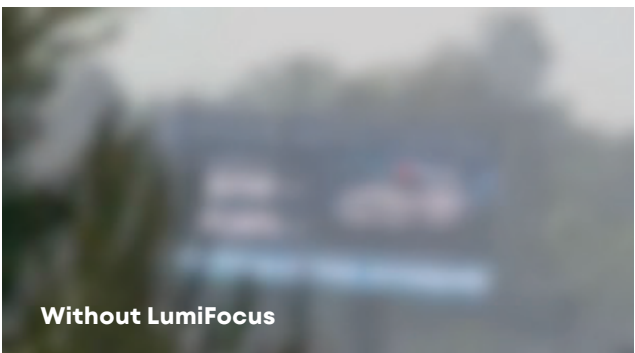


LumiDesertPro

Built to Last.

LumiDesertPro technology ensures rugged all-weather performance. Depending on the product model, LumiDesertPro allows operation in temperatures 60 °C (140 °F) or higher.





LumiFocus

Precision Where It Matters.

Thanks to LumiFocus technology, all Luminys PTZs feature the unique ability to keep targets in focus so operators never lose sight when zooming in or out of a scene. As a result, this feature is ideal for PTZs that are on a tour, ensuring important information is always in focus.

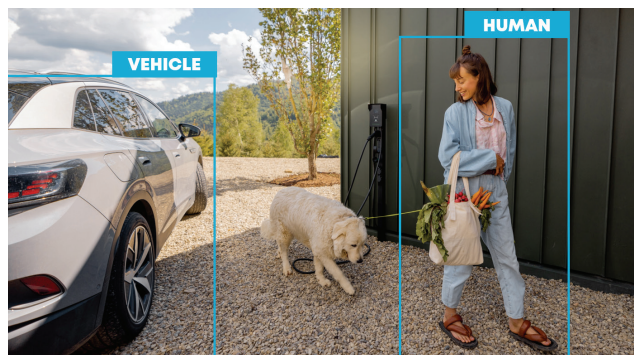
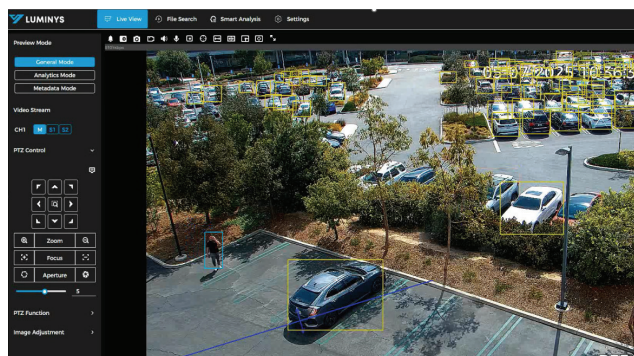
LumiFocus technology — delivers seamless, razor-sharp focus at every zoom level. No delays, no distractions, no refocusing of the lens — just crystal-clear footage from start to finish.



LumiTracking

Follow the Things that Matter.

LumiTracking technology enhances security and efficiency by automating the tracking of people and vehicles. It uses advanced AI algorithms to monitor and predict the direction and speed of moving targets, enabling quick response to potential issues for enhanced security and smooth operation. **Available on all Luminys PTZs.**



Example of LumiPower Using Network Camera and NVR:



IP Camera with LumiPower

LumiPower, up to 3,000 Feet



NVR with LumiPower



LumiPower

Go the Distance.

Power over Ethernet technology enables extended power and data transmission via a single Ethernet cable. Allows for distances of up to 3,000 feet, simplifying installations in larger or more complex environments by eliminating the need for additional power sources or repeaters. Ensures consistent connectivity and dependable power management throughout your security infrastructure.



N5-C Series

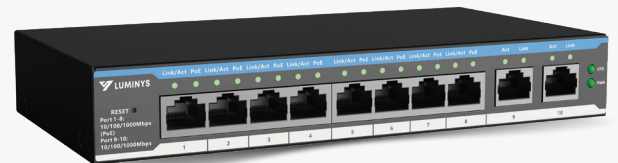
N5-L Series



LumiPoE

Extend Your Range. Powerful, Efficient, Long-distance.

Power over Ethernet (PoE) technology enables extended power and data transmission via a single Ethernet cable. Allows for distances of up to 820 feet, simplifying installations in larger or more complex environments by eliminating the need for additional power sources or repeaters. Ensures consistent connectivity and dependable power management throughout your security infrastructure.



Standard PoE



Up to 328 feet



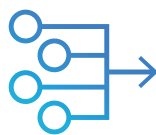
LumiPoE



Up to 820 feet

Bandwidth limited to 10Mbps/port





LumiFlex

More Coverage. Reduced Channels. Fewer Licenses.

Running low on channels? No problem. LumiFlex technology is available on select multi-sensor cameras for more coverage while reducing the number of channels and licenses. Multi-sensors with the LumiFlex capability feature multiple sensors that can be individually positioned to capture different areas of a scene. The footage from each sensor can then be combined to create one continuous stream for a higher return on investment.



Camera Naming Conventions

N 5 D - 4 L A 2 C							
Technology	Series	Form Factor	Resolution	CORE Function	Generation	Lens	Cloud/Color
N Network	5 LumiLuxSmart LumiColor LumiDeterrent	B Bullet	4 4MP	C LumiColor	A Gen1	2 2.8mm	C Direct to Cloud
	9 Pano LPR Fisheye	T Turret	8 8MP	S LumiSearch		V Vari-focal	B Black
	4 LumiNightKing	D Dome	12 12MP	D LumiDeterrent			
	3 LumiLightBand	P Panoramic		L LumiLuxSmart			
	2 IR	F Fisheye		R IR			
		W Wedge		B LumiLightBand			
				V LumiNightKing			



PTZ Naming Conventions

P 5 4 - 8 R A 25						
Technology	Tier/Series	Form Factor	Resolution	Function	Generation	Lens/Color
P PTZ	2 entry level	2 2"ptz	8 8MP	S Lumisearch	A Gen1	25 25x optical zoom
	3 Nightking series	4 4" PTZ	5 5MP	D LumiDeterrent	B Gen2	45 45x optical zoom
	4 Standard series	5 5" PTZ	4 4MP	R IR		32 32x optical zoom
	5 Core Series	C In-ceiling PTZ		N Nightking		4 4x optical zoom
				T Starlight		16D 16x digital zoom



NVR Naming Conventions

R 5 T - 32 N A 4						
Technology	Series	HDD No.	Channel No.	Function	Generation	HDD Size
R NVR	3 Starter	1 1 HDD	4 4CH	P POE	A Gen1	1 1T
	4 Mainstream	2 2 HDD	8 8CH	N Non POE, Dual NIC	B Gen2	2 2T
	5 Mainstream	4 4 HDD	16 16CH			4 4T
	6 Extreme	8 8 HDD	24 24CH			8 8T
		S 16 HDD	32 32CH			T 10T
		T 24 HDD	64 64CH			
			X 128CH			



Switch Naming Conventions



Access Control Naming Conventions

C

2

G

A

Technology	Door	Material Appearance	Generation
C Controller	1 1 Door	P Plastic	A Gen1
E Enclosure	2 2 Door	M Metal	B Gen2

4 4 Door	N Narrow
F Face	W Wide
	4 4.3-in

RD

1

M

G

Technology	Generation	Control Type	Material Appearance
RD Reader	1 1st Generation	B Bluetooth	P Plastic
ED Enrollment	2 2nd Generation	P Password	M Metal
		C Card	N Narrow
			W Wide
			U USB



01

LumiCloud Features



LumiCloud

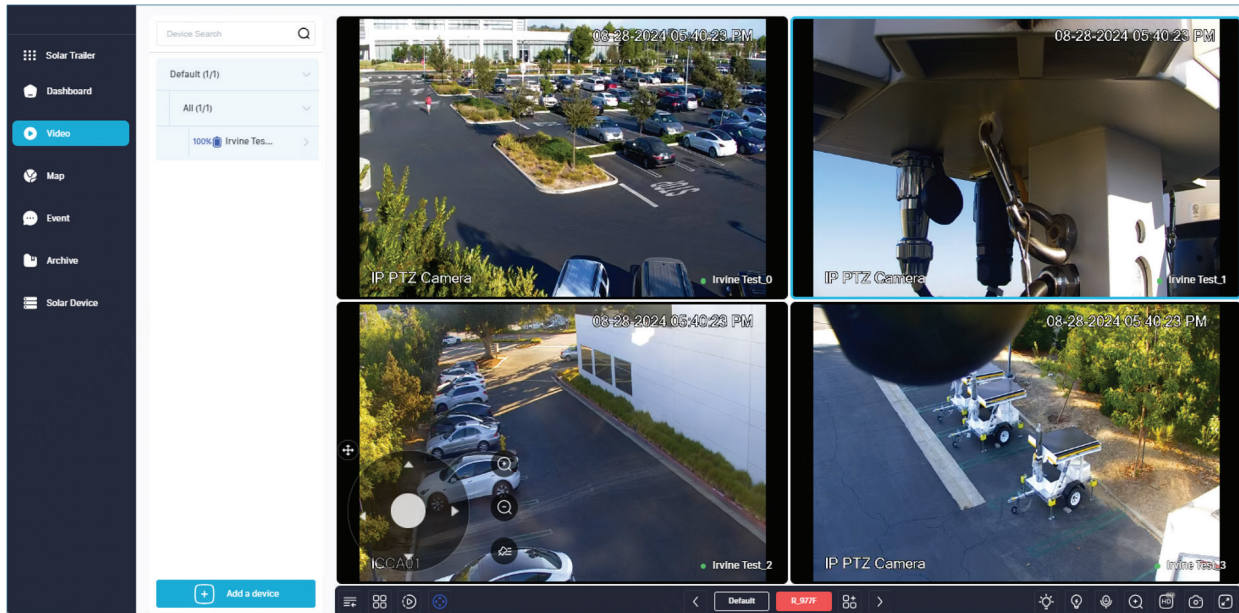
The Next-Generation of Video Surveillance

Revolutionize the way you monitor and manage your security system.



LumiCloud is a Video Surveillance as a Service (VSaaS) solution powered by a variety of algorithms that provides the ability to search, receive alerts and analyze patterns of detections across locations and historical data. Data is centrally stored in the cloud with easy access from web browsers and smart phone apps.

LumiCloud supports high-resolution video streams, ensures clarity, and provides real-time access from anywhere. This platform provides advanced analytics, customizable alerts, effective bandwidth management, and simple subscription-based scalability.



View and search live or recorded video through a web browser or smart phone.

- Luminys Network Cameras
- Luminys NVRs
- Luminys Network Switches
- Luminys Access Control
- LumiGuardian Solar Trailer

LumiCloud Key Features



Dashboard Management

- Access cameras and other devices
- No port forwarding
- Connect anywhere, anytime, with any device



Optimize Your IT Costs

- No need to purchase an expensive server or hire maintenance staff
- Maximize time and resources while minimizing IT costs



Quickly Connect Devices

- Add a device manually or via QR Code
- Supports select camera and NVRs, LumiGuardian trailer, POE Switches and access control



Trusted

- Video data is stored and managed in the cloud
- Reliable protection against threats from both inside and outside



Easy Configuration

- Remotely login and configure devices
- No server hardware to install, manage, or configure

* Device must support an HTML-5 web-browser.



**Connect
Capture
View**



Plug into the Cloud

Direct-to-cloud connection, storage, video playback, events & alerts...

One-stop cloud management for your video security.

What Can I do with LumiCloud?

- Secure storage of video and data in the cloud...no need for a DVR/NVR
- Remote connection from anywhere*
- View live video
- Playback video stored in cloud or on camera
- Remote device configuration
- Map camera locations
- Device status, notifications and alerts
- AI-based smart search, iMD and VCA event data
- Archive video (up to 30GB per end-user account)
- Share video and events
- Dashboard overview, reports and more...
- OTA firmware updates
- One-year subscription included with LumiCloud Camera (LCL-HDV-UC)

CLOUD VSaaS



* Requires Internet connection and browser that supports HTML-5 or LumiCloud app on Smartphone.

LumiCloud Cameras

- ✓ 4MP Resolution
- ✓ Smart Encoding
- ✓ WDR
- ✓ IR (<98FT)
- ✓ White LED Light (<98FT)
- ✓ Microphone
- ✓ IP67
- ✓ Micro SD Card (256GB) Included
- ✓ LumiPower & PoE
- ✓ iMD
- ✓ VCA+
- ✓ Includes 1 Year LumiCloud Unity Subscription (LCL-HDV-UC)



N5B-4LA2C



N5T-4LA2C



N5D-4LA2C

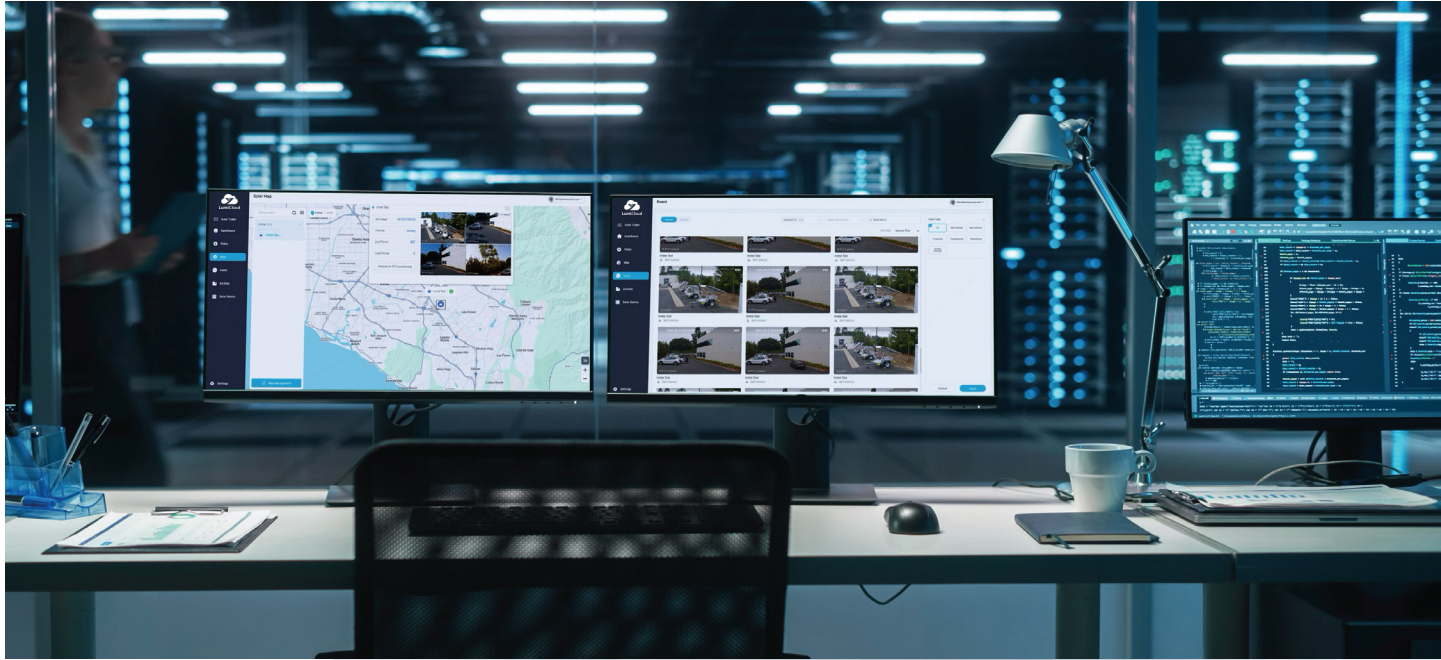
LumiCloud Features: Video

LUMICLOUD

LUMICENTER

NETWORK CAMERA

NETWORK VIDEO
RECORDER



LumiCloud Lite

- Included free with purchase of select Luminy NVRs and Cameras.
- Upgrade to LumiCloud Unity for additional features. (LCL-HDV-U offers a one-year subscription)
- LumiCloud supports R3 and R5 NVR models.



	Feature	LumiCloud Lite	LumiCloud Unity
License & Subscription	SKU	Free w/ Hardware	LCL-HDV-U
	Subscription Length	Perpetual	1 Year
General Function	Secure Remote Connection	Y	Y
	Device Registration via QR Code	Y	Y
	Live View	Y	Y
	Playback from Local Storage	Y	Y
	Device Management	Y	Y
Interactive Management & Monitoring	Site Map	-	Y
	Channel Configuration	-	Y
Cloud Storage	Event Cloud Storage	-	Y
	Permanent Archive (Max 30 GB)	-	Y
Event & Alert	Event Record on Local Storage	Y	Y
	Event Cross Platform Alert	-	Y
	iMD Event	-	Y
	VCA Event	-	Y
	Car of Interest	-	Y
	Metadata (R5 NVR series)	-	Y
	LumiSearch	-	Y
	Person of Interest	-	Y
User Function	User Control	-	Y
	Video/Event Sharing	-	Y
System Function	Device Online Status	Y	Y
	OTA Firmware	Y	Y
	Software Upgrade	Y	Y
	Health Alerts	-	Y
	Comprehensive Reports	-	Y

ACCESS CONTROL

TRANSMISSION

ACCESSORIES

LUMIGUARDIAN

LumiCloud Features: Access

LUMICLOUD

LUMICENTER

NETWORK CAMERA

NETWORK VIDEO
RECORDER



Simplifying Access Control with LumiCloud:

- Manages 1 door
- Manage Credential & User Permissions
- Door Management
 - ✓ Configure Users & Door Groups
 - ✓ Remote Monitoring and Management
 - ✓ Simplified Configuration Processes
 - ✓ Real-Time Network Health Monitoring
- Scalable and Flexible Deployment



	Feature	LumiCloud Access
License & Subscription	SKU	LCL-ACD
	Subscription Length	1 Year
General	Secure Remote Connection	Y*
	Device online status	Y*
	OTA Firmware update	Y*
Access Schedule	User Management	Y*
	Access rules configuration	Y
	Weekly schedule	Y
	Exception schedule	Y
	User information extraction	Y
	Door configuration	Y
Advance function	First-person Unlock	Y
	Multi-person Unlock	Y
	Interlock**	Y
	Anti-passback**	Y
Video Access Control	NVR channel linkage	Y
	Linked camera live view	Y
	Event search	Y
	Event retrieval	Y
	Comprehensive Reports	Y

* Included with hardware purchase
** Feature Coming Soon

ACCESS CONTROL

TRANSMISSION

ACCESSORIES

LUMIGUARDIAN

LumiCloud Features: Network Switches

LUMICLOUD

LUMICENTER

NETWORK CAMERA

NETWORK VIDEO
RECORDER



Simplifying Network Management with LumiCloud:

- Centralized Network Control
- Remote Monitoring and Management
- Simplified Configuration Processes
- Real-Time Network Health Monitoring
- Scalable and Flexible Deployment
- Remote Access with Secure Connectivity
- LumiCloud supports network switch models SML-6GPA, SML-10GPA, SML-20GPA and SML-28GPA

	Features	Network Switch
License & Subscription	SKU	LCL-SW100
	Subscription Length	1 Year
General Function	Secure Remote Connection	Y*
	Device Registration via QR	Y*
	OTA firmware	Y*
Switch Management	Switch Panel View	Y
	Switch Setting and Status	Y
	Switch Reboot	Y
	Congestion Threshold	Y
	Comprehensive Report	Y
	VLAN**	Y
Port Management	Port Status	Y
	Port Setting	Y
	Port Control	Y
	POE Watchdog	Y
	Port Alert	Y
Advance Function	Device information Detection**	Y
	Automatic Topology diagram**	Y

* Included with hardware purchase

** Feature Coming Soon



LumiCenter

02

LumiCenter Features

LumiCenter VMS

Unifying Security, Amplifying Intelligence



Unified Control Interface:

Seamless integration and management of multiple devices from one interface.



Advanced Analytics:

On-board camera analytics and AI-based analytics detection.



Real-Time Monitoring:

Timely alerts with automated event responses.

LumiCenter Overview

LumiCenter is a state-of-the-art video management software (VMS) designed to seamlessly integrate surveillance cameras, AI-based analytics, and robust server software with web clients and mobile applications. The software enables you to take a proactive stance on security, predicting and alerting to potential incidents before they escalate. Dynamic map navigation and response systems let you quickly access video feed and automate responses. LumiCenter eliminates the common frustrations of most video management systems and provides a streamlined, intelligent solution to video monitoring and management.

AI-Powered Analytics

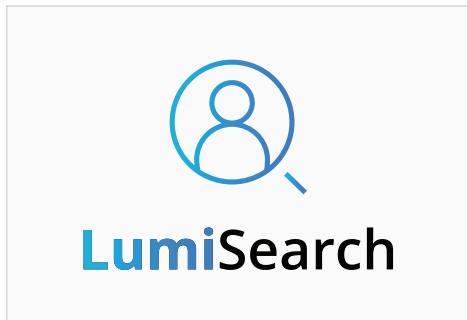
LUMICLOUD



Behavior Analytics: Man Down Detected

- The LumiCenter AI Tracker Channel (LCE-AIT) is AI solution to integrate seamlessly with the LumiCenter Plus/Max platform, providing advanced AI-driven features to enhance video surveillance capabilities.

LUMICENTER



LumiSearch VMS: Tag and Track People

- AI analytics extracts human appearance features and stores them in a database.
- Select a person in a video frame or upload a photo to quickly find similar individuals within security footage from multiple cameras.

NETWORK CAMERA



Real-time Analytics: Advanced Motion Detection

- AI analytics extracts human appearance features and stores them in
- Supports embedded camera analytics for important scene metadata and information.
- Supports ONVIF profiles M and T.
- Reduces false events and alerts with state-of-the-art algorithms.

NETWORK VIDEO
RECORDER



Web, Desktop, and Mobile Clients

- Access LumiCenter from any device.
- Easily change video viewing and analytic settings and monitor video feeds from anywhere.



PanoMerge™

- Seamlessly combine feeds from up to three (3) cameras to create a panoramic view.
- View live or playback panoramic video
- Export panoramic footage as standard .avi or .mkv files.
- Select and zoom into any part of the merged image.

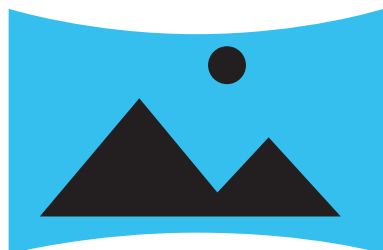
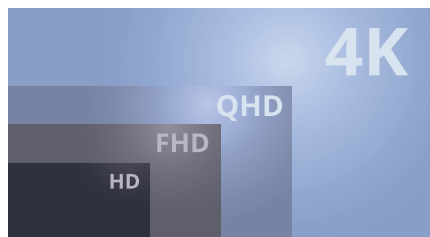


Image Dewarping

- Dewarp and correct images without any additional burden on the client CPU.



AutoStream™

- Automatically chooses a camera stream that matches the client's screen resolution.
- Saves network bandwidth and client CPU resources using adaptive video streaming.

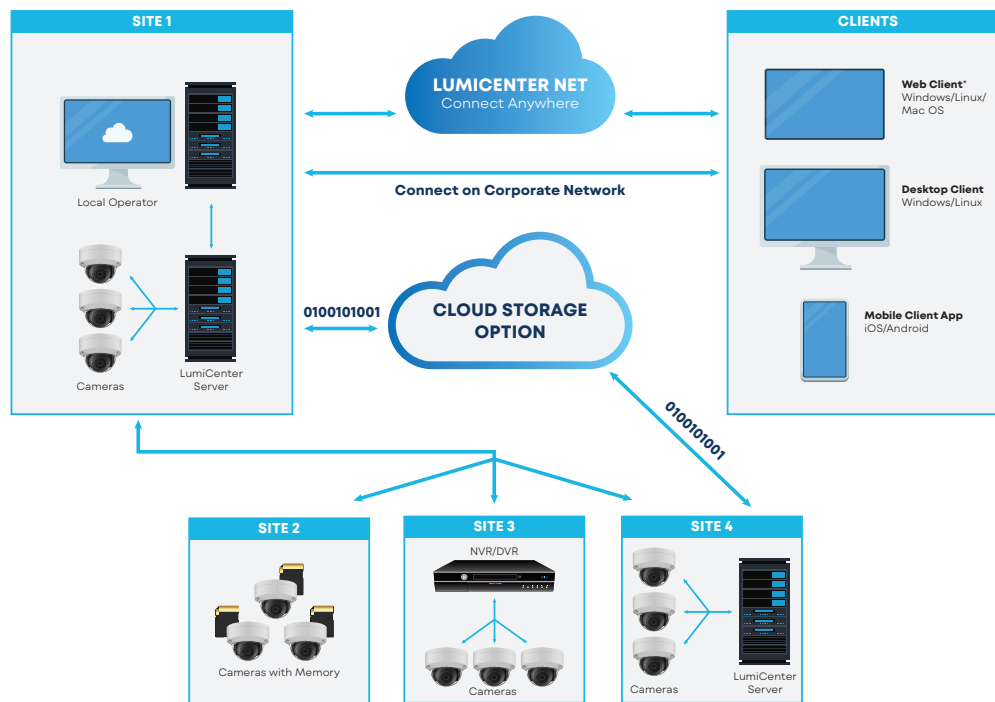


LumiCenter Net

- Provides an intuitive, user-friendly web client without the need for port forwarding or an open network port.
- View live or recorded video remotely from any HTML 5 supported browser.

LumiCenter System Diagram

LumiCenter is designed to be an all-in-one integration and management hub for your surveillance and access control devices. It allows you to store data at the edge, locally, or in a centralized server. Access your systems and information no matter where you are or what device you are on with LumiCenter Net and our various clients.



Key Features

- Scalable to suit any type and size of application.
- ONVIF support for compatibility with thousands of third-party IP cameras and devices.
- Advanced AI-based video analytics and embedded camera analytics.
- LumiSearch enables quick location of objects and individuals in recorded footage.
- One-time license fee with no annual maintenance.

LumiCenter Feature Matrix

There are three variants of LumiCenter: Basic, Plus and Max, choose the one that fits your needs. Each license enables video capture, display, record, transmit and playback of one video channel from an IP camera or IP

device. Additional functionality includes input/output, audio and PTZ support. LumiCenter VMS supports ONVIF profiles G, M, S and T for maximum IP camera and device compatibility. The software license has no annual maintenance fee.

Features	LumiCenter Basic	LumiCenter Plus	LumiCenter Max
SKU	LCE-BASV	LCE-PLSV	LCE-MAXV
Max # Distributed Servers	30	30	unlimited
Max # Cameras	unlimited	unlimited	unlimited
Real-time Analytics (Object Tracker)	Y	Y	Y
Edge Analytics (Camera Metadata)	Y	Y	Y
Edge Storage (Playback Only)	Y	Y	Y
AutoStream™ Bandwidth Management	Y	Y	Y
Interactive 3D Map	Y	Y	Y
Web Client	Y	Y	Y
Timeslice Search (Search by Time Intervals)	Y	Y	Y
Privacy Masking	Y	Y	Y
Macros (Event-Response Scenarios)	Y	Y	Y
ONVIF Profiles G, S, T, M	Y	Y	Y
Video Bookmarking (Searchable Text Comments)	Y	Y	Y
PanoMerge™	Y	Y	Y
LumiCenter Net (Cloud Service)		Y	Y
Reports		Y	Y
Cross-System Client		Y	Y
Videowall		Y	Y
LumiSearch VMS			Y
Storage Replication			Y
Failover			Y
LDAP Service			Y

ACCESS CONTROL

TRANSMISSION

ACCESSORIES

LUMIGUARDIAN

LumiCenter Add-on Modules (per Channel License)

Add more power to your system with LumiCenter add-on Modules*

Features	SKU	LumiCenter Basic	LumiCenter Plus	LumiCenter Max
LumiCenter Access Control	LCE-AC	Y	Y	Y
LumiCenter AI Tracker	LCE-AIT		Y	Y**
LumiCenter Face Recognition	LCE-FR		Y	Y
LumiCenter Face Recognition - 10 Pack	LCE-FR10		Y	Y
LumiCenter LPR	LCE-LPR		Y	Y
LumiCenter LPR Search	LCE-LPRS		Y	Y
LumiCenter PPE	LCE-PPE		Y	Y

Add-on video modules require the purchase of LumiCenter Basic, Plus or Max video license.

*Add-on Modules require a LumiCenter video license.

** Already Included in LumiCenter Max

03

Network Cameras



Low-light Technology Feature Matrix

Luminys offers a comprehensive range of low-light camera technologies, delivering full-color performance in near-dark conditions. Each camera series is tailored with distinct features to enhance visibility and efficiency, providing flexible solutions for a wide range of security applications. For added flexibility, the brightness intensity of Luminys cameras with white-light LEDs can be remotely adjusted to minimize light pollution and optimize visibility.

Camera Technology	Technical Description	IR Mode	White-light LED Mode	Dual-illumination: IR and White-light LEDs	Unique Features
LumiColor: N5-C Mainstream Series	Cameras with LumiColor technology feature a large aperture lens to capture more available light and integrated dusk-to-dawn white-light LEDs for full-color video down to 0.0005 lux at F1.0.		●		LumiPower for extended distance
LumiDeterrent: N5-D Mainstream Series	Cameras with LumiDeterrent technology feature a large aperture lens to capture more available light and red and blue deterrent lights that work in tandem with dual-illumination for full-color video down to 0.001 - 0.002 lux at F1.0.	●	●	●	Red and blue flashing lights and an audio alarm
LumiLuxSmart: N5-L Mainstream Series N3-L Starter Series*	Cameras with LumiLuxSmart technology feature dual-illumination for full-color video down to 0.0005 to 0.0008 lux (Mainstream Series) and 0.005 to 0.007 lux (Starter Series).	●	●	●	LumiPower* for extended distance
LumiNightKing: N4 Mainstream Series	Cameras with LumiNightKing technology feature a powerful AI-ISP chipset, enhanced pixel size 2.9µm, and a large F1.0 aperture lens to capture more available light for full-color video down to 0.0003 lux at F1.0.		●		AI-ISP for covert mode
LumiLightBand: N3-B Starter Series	Cameras with the colorful proactive LumiLightBand technology video 0.008 lux at F1.6.	●	●	●	Colorful band of deterrent LEDs

*N3-L LumiPower not included



N2D-8RB2



N2T-8RB2



N2B-8RB2

Series	N2 Starter Series		
Image Sensor	1/2.7-in. CMOS	1/2.7-in. CMOS	1/2.7-in. CMOS
Max. Resolution	8MP (3840 x 2160)	8MP (3840 x 2160)	8MP (3840 x 2160)
Focal Length	2.8 mm	2.8 mm	2.8 mm
Min. Illumination	Color: 0.18 Lux, B/W: <0.005 Lux	Color: 0.18 Lux, B/W: <0.005 Lux	Color: 0.18 Lux, B/W: <0.005 Lux
Max. IR Distance	98 ft (30 m)	98 ft (30 m)	98 ft (30 m)
Max. White-light Distance	N/A	N/A	N/A
LumiSearch / LumiSearch+	N/A	N/A	N/A
LumiAnalytics*	N/A	N/A	N/A
iMD	Yes	Yes	Yes
VCA / VCA+	N/A	N/A	N/A
Audio In/Out	1 Input/ 1 Output	Built-in Microphone, 1 Input/ 1 Output	Built-in Microphone, 1 Input/ 1 Output
Alarm In/Out	1 Input/1 Output	1 Input/1 Output	1 Input/1 Output
Memory Slot	Max 1 TB	Max 1 TB	Max 1 TB
Protection Rating	IP66, IK10	IP66, IK10	IP66, IK10
Operating Temperature	-22°F to 140°F (-30°C to 60°C)	-22°F to 140°F (-30°C to 60°C)	-22°F to 140°F (-30°C to 60°C)
Power	PoE, 12VDC	PoE, 12VDC	PoE, 12VDC

ACCESS CONTROL

TRANSMISSION

ACCESSORIES

LUMIGUARDIAN

**N2D-8RBV****N2T-8RBV****N2B-8RBV**

Series	N2 Starter Series		
Image Sensor	1/2.7-in. CMOS	1/2.7-in. CMOS	1/2.7-in. CMOS
Max. Resolution	8MP (3840 x 2160)	8MP (3840 x 2160)	8MP (3840 x 2160)
Focal Length	2.7 mm to 13.5 mm	2.7 mm to 13.5 mm	2.7 mm to 13.5 mm
Min. Illumination	Color: 0.2 Lux, B/W: <0.005 Lux	Color: 0.2 Lux, B/W: <0.005 Lux	Color: 0.2 Lux, B/W: <0.005 Lux
Max. IR Distance	98 ft (30 m)	98 ft (30 m)	98 ft (30 m)
Max. White-light Distance	N/A	N/A	N/A
LumiSearch / LumiSearch+	N/A	N/A	N/A
LumiAnalytics*	N/A	N/A	N/A
iMD	Yes	Yes	Yes
VCA / VCA+	N/A	N/A	N/A
Audio In/Out	Built-in Microphone, 1 Input/ 1 Output	Built-in Microphone, 1 Input/ 1 Output	Built-in Microphone, 1 Input/ 1 Output
Alarm In/Out	1 Input/1 Output	1 Input/1 Output	1 Input/1 Output
Memory Slot	Max 1 TB	Max 1 TB	Max 1 TB
Protection Rating	IP66, IK10	IP66, IK10	IP66, IK10
Operating Temperature	-22°F to 140°F (-30°C to 60°C)	-22°F to 140°F (-30°C to 60°C)	-22°F to 140°F (-30°C to 60°C)
Power	PoE, 12VDC	PoE, 12VDC	PoE, 12VDC



N3B-8LAV



N3T-4LA2



N3T-4LAV

Series	N3-L LumiLuxSmart		
Image Sensor	1/2.7-in. CMOS	1/2.9-in. CMOS	1/2.9-in. CMOS
Max. Resolution	8MP (3840*2160)	4MP (2688 x 1520)	4MP (2688 x 1520)
Focal Length	2.7 mm to 13.5 mm	2.8 mm	2.7 mm to 13.5 mm
Min. Illumination	Color: 0.007 Lux at F1.5B/W: 0.0007 Lux at F1.50 Lux with Illuminator on	Color: 0.005 Lux at F1.6B/W: 0.0005 Lux at F1.60 Lux with Illuminator on	Color: 0.005 Lux at F1.5B/W: 0.0005 Lux at F1.50 Lux with Illuminator on
Max. IR Distance	200 ft (60.96 m)	100 ft (30.48 m)	130 ft (39.62 m)
Max. White-light Distance	200 ft (60.96 m)	100 ft (30.48 m)	130 ft (39.62 m)
LumiSearch / LumiSearch⁺	No	No	No
LumiAnalytics[*]	No	No	No
iMD	Yes	Yes	Yes
VCA / VCA⁺	VCA	VCA	VCA
Audio In/Out	Built-in Microphone, 1 Input/1 Output	Built-in Microphone, 1 Input/1 Output	Built-in Microphone
Alarm In/Out	1 Input/1 Output	1 Input/1 Output	NA
Memory Slot	Max 256 GB	Max 256 GB	Max 256 GB
Protection Rating	IP67, IK10	IP67	IP67
Operating Temperature	-40°F to +140°F (-40°C to +60°C)	-40°F to +140°F (-40°C to +60°C)	-22°F to +140°F (-30°C to +60°C)
Power	PoE, 12V DC	PoE, 12V DC	PoE, 12V DC

ACCESS CONTROL

TRANSMISSION

ACCESSORIES

LUMIGUARDIAN

**N3T-8LA2****N3T-8LAV****N3D-4LA2**

Series	N3-L LumiLuxSmart		
Image Sensor	1/2.7-in. CMOS	1/2.7-in. CMOS	1/2.9-in. CMOS
Max. Resolution	8MP (3840*2160)	8MP (3840*2160)	4MP (2688 x 1520)
Focal Length	2.8 mm	2.7 mm to 13.5 mm	2.8 mm
Min. Illumination	Color: 0.007 Lux at F1.6B/W: 0.0007 Lux at F1.60 Lux with Illuminator on	Color: 0.007 Lux at F1.5B/W: 0.0007 Lux at F1.50 Lux with Illuminator on	Color: 0.005 Lux at F1.6B/W: 0.0005 Lux at F1.60 Lux with Illuminator on
Max. IR Distance	100 ft (30.48 m)	130 ft (39.62 m)	100 ft (30.48 m)
Max. White-light Distance	100 ft (30.48 m)	130 ft (39.62 m)	100 ft (30.48 m)
LumiSearch / LumiSearch+	No	No	No
LumiAnalytics*	No	No	No
iMD	Yes	Yes	Yes
VCA / VCA+	VCA	VCA	VCA
Audio In/Out	Built-in Microphone, 1 Input/1 Output	Built-in Microphone	Built-in Microphone, 1 Input/1 Output
Alarm In/Out	1 Input/1 Output	NA	1 Input/1 Output
Memory Slot	Max 256 GB	Max 256 GB	Max 256 GB
Protection Rating	IP67	IP67	IP67, IK10
Operating Temperature	-40°F to +140°F (-40°C to +60°C)	-22°F to +140°F (-30°C to +60°C)	-40°F to +140°F (-40°C to +60°C)
Power	PoE, 12V DC	PoE, 12V DC	PoE, 12V DC



N3D-4LAV



N3D-8LA2



N3D-8LAV



N3W-4LA2

Series	N3-L LumiLuxSmart			
Image Sensor	1/2.9-in. CMOS	1/2.7-in. CMOS	1/2.7-in. CMOS	1/2.9-in. CMOS
Max. Resolution	4MP (2688 x 1520)	8MP (3840*2160)	8MP (3840*2160)	4MP (2688 x 1520)
Focal Length	2.7 mm to 13.5 mm	2.8 mm	2.8 mm	2.8 mm
Min. Illumination	Color: 0.005 Lux at F1.5B/W: 0.0005 Lux at F1.50 Lux with Illuminator on	Color: 0.007 Lux at F1.6B/W: 0.0007 Lux at F1.60 Lux with Illuminator on	Color: 0.007 Lux at F1.6B/W: 0.0007 Lux at F1.60 Lux with Illuminator on	Color: 0.007 Lux at F1.6B/W: 0.0007 Lux at F1.60 Lux with Illuminator on
Max. IR Distance	130 ft (39.62 m)	100 ft (30.48 m)	200 ft (60.96 m)	100 ft (30.48 m)
Max. White-light Distance	130 ft (39.62 m)	100 ft (30.48 m)	200 ft (60.96 m)	100 ft (30.48 m)
LumiSearch / LumiSearch*	No	No	No	No
LumiAnalytics*	No	No	No	No
iMD	Yes	Yes	Yes	Yes
VCA / VCA+	VCA	VCA	VCA	VCA
Audio In/Out	Built-in Microphone, 1 Input/1 Output	Built-in Microphone, 1 Input/1 Output	Built-in Microphone, 1 Input/1 Output	Built-in Microphone, 1 Input/1 Output
Alarm In/Out	1 Input/1 Output	1 Input/1 Output	1 Input/1 Output	1 Input/1 Output
Memory Slot	Max 256 GB	Max 256 GB	Max 256 GB	Max 256 GB
Protection Rating	IP67, IK10	IP67, IK10	IP67, IK10	IP67, IK10
Operating Temperature	-40°F to +140°F (-40°C to +60°C)	-40°F to +140°F (-40°C to +60°C)	-40°F to +140°F (-40°C to +60°C)	-40°F to +140°F (-40°C to +60°C)
Power	PoE, 12V DC	PoE, 12V DC	PoE, 12V DC	PoE, 12V DC

ACCESS CONTROL

TRANSMISSION

ACCESSORIES

LUMIGUARDIAN



N3B-4LA2

N3B-4LAV

N3B-8LA2

Series	N3-L		
Image Sensor	1/2.9-in. CMOS	1/2.9-in. CMOS	1/2.7-in. CMOS
Max. Resolution	4MP (2688 x 1520)	4MP (2688 x 1520)	8MP (3840x2160)
Focal Length	2.8 mm	2.7 mm to 13.5 mm	2.8 mm
Min. Illumination	Color: 0.005 Lux at F1.6B/W: 0.0005 Lux at F1.60 Lux with Illuminator on	Color: 0.005 Lux at F1.5B/W: 0.0005 Lux at F1.50 Lux with Illuminator on	Color: 0.007 Lux at F1.6B/W: 0.0007 Lux at F1.60 Lux with Illuminator on
Max. IR Distance	100 ft (30.48 m)	200 ft (60.96 m)	100 ft (30.48 m)
Max. White-light Distance	100 ft (30.48 m)	200 ft (60.96 m)	100 ft (30.48 m)
LumiSearch / LumiSearch+	No	No	No
LumiAnalytics*	No	No	No
iMD	Yes	Yes	Yes
VCA / VCA+	VCA	VCA	VCA
Audio In/Out	Built-in Microphone, 1 Input/1 Output	Built-in Microphone, 1 Input/1 Output	Built-in Microphone, 1 Input/1 Output
Alarm In/Out	1 Input/1 Output	1 Input/1 Output	1 Input/1 Output
Memory Slot	Max 256 GB	Max 256 GB	Max 256 GB
Protection Rating	IP67	IP67, IK10	IP67
Operating Temperature	-40°F to +140°F (-40°C to +60°C)	-40°F to +140°F (-40°C to +60°C)	-40°F to +140°F (-40°C to +60°C)
Power	PoE, 12V DC	PoE, 12V DC	PoE, 12V DC



N3T-8BA2



N4T-8VA2



N4B-8VA2

Series	N3-B LumiLightBand	N4 LumiNightKing	
Image Sensor	1/2.7-in. CMOS	1/1.8-in. CMOS	1/1.8-in. CMOS
Max. Resolution	8MP (3840 x 2160)	8MP (3840 x 2160)	8MP (3840 x 2160)
Focal Length	2.8 mm	2.8 mm	2.8 mm
Min. Illumination	Color: 0.008 Lux at F1.6 B/W: 0.0008 Lux at F1.6 0 Lux with Illuminator on	Color: 0.0008 Lux at F1.0 0 Lux with Illuminator on	Color: 0.0008 Lux at F1.0 0 Lux with Illuminator on
Max. IR Distance	98 ft (30 m)	NA	NA
Max. White-light Distance	98 ft (30 m)	164 ft (50m)	164 ft (50m)
LumiSearch / LumiSearch+	No	No	No
LumiAnalytics*	No	No	No
iMD	Yes	Yes	Yes
VCA / VCA+	VCA	VCA	VCA
Audio In/Out	Built-in Microphone	Built-in Microphone	Built-in Microphone
Alarm In/Out	N/A	NA	NA
Memory Slot	Max 256 GB	Max 256 GB	Max 256 GB
Protection Rating	IP67	IP67	IP67
Operating Temperature	-40°F to +140°F (-40°C to +60°C)	-40°F to +140°F (-40°C to +60°C)	-40°F to +140°F (-40°C to +60°C)
Power	PoE, 12VDC	PoE, 12VDC	PoE, 12VDC

Definitions:

VCA: Line Crossing and Intrusion

VCA+: Line Crossing, Intrusion, Loitering Detection, and Parking Detection

ACCESS CONTROL

TRANSMISSION

ACCESSORIES

LUMIGUARDIAN

**N5T-4DA2****N5T-8DA2****N5T-8DAV****N5P-8DA2**

Series	N5-D LumiDeterrent			
Image Sensor	1/2.7-in. CMOS	1/2.8-in. CMOS	1/2.8-in. CMOS	1/2.7-in, CMOS
Max. Resolution	4MP (2688 × 1520)	8MP (3840 × 2160)	8MP (3840 × 2160)	2x4MP (4096 × 1860)
Focal Length	2.8 mm	2.8 mm	2.7 mm to 13.5 mm	2.8 mm
Min. Illumination	Color: 0.001 Lux at F1.0 B/W: 0.0001 Lux at F1.0 0 Lux with Illuminator on	Color: 0.001 Lux at F1.0 B/W: 0.0001 Lux at F1.0 0 Lux with Illuminator on	Color: 0.002 Lux at F1.0 B/W: 0.0002 Lux at F1.0 0 Lux with Illuminator on	Color: 0.002 Lux at F1.4 B/W: 0.0002 Lux at F1.4 0 Lux with Illuminator on
Max. IR Distance	98 ft (30 m)	98 ft (30 m)	164 ft (50 m)	82 ft (25 m)
Max. White-light Distance	98 ft (30 m)	98 ft (30 m)	131 ft (40 m)	66 ft (20 m)
LumiSearch / LumiSearch*	LumiSearch	LumiSearch	LumiSearch	No
LumiAnalytics*	No	No	No	No
iMD	Yes	Yes	Yes	Yes
VCA / VCA+	VCA+ **	VCA+ **	VCA+ **	VCA+ **
Audio In/Out	Built-in Microphone, 1 Input/ Built-in Speaker, 1 Output	Built-in Microphone, 1 Input/ Built-in Speaker, 1 Output	Built-in Microphone, 1 Input/ Built-in Speaker, 1 Output	Built-in Microphone, 1 Input/ Built-in Speaker, 1 Output
Alarm In/Out	1 Input/1 Output	1 Input/1 Output	1 Input/1 Output	1 Input/1 Output
Memory Slot	Max 256 GB	Max 256 GB	Max 512 GB	Max 256 GB
Protection Rating	IP67	IP67	IP67	IP67
Operating Temperature	-40°F to +140°F (-40°C to +60°C)	-40°F to +140°F (-40°C to +60°C)	-22°F to +140°F (-30°C to +60°C)	-40°F to +140°F (-40°C to +60°C)
Power	PoE, 12VDC	PoE, 12VDC	PoE, 12VDC	PoE, 12VDC

*Face Detection, People Counting, Queue Management, Heat Map, Smart Object Detection. Features may vary, please refer to the datasheet.

**Parking Detection Not Supported

***Fence Climbing, Abandoned/Missing Object, People Gathering, Vehicle/Human Alarm Classification, Linkage Tracking



N5T-4LA2



**N5T-8LA2/
N5T-8LA2B**



N5T-12LA2

Series	N5-L LumiLuxSmart		
Image Sensor	1/1.8-in. CMOS	1/1.8-in. CMOS	1/2.5-in. CMOS
Max. Resolution	4MP (2688 × 1520)	8MP (3840 x 2160)	12MP (4512 x 2512)
Focal Length	2.8 mm	2.8 mm	2.8 mm
Min. Illumination	Color: 0.0005 Lux at F1.0 B/W: 0.0003 Lux at F1.0 0 Lux with Illuminator on	Color: 0.0005 Lux at F1.0 B/W: 0.0003 Lux at F1.0 0 Lux with Illuminator on	Color: 0.0085 Lux at F1.6 B/W: 0.0008 Lux at F1.6 0 Lux with Illuminator on
Max. IR Distance	98 ft (30 m)	98 ft (30 m)	98 ft (30 m)
Max. White-light Distance	98 ft (30 m)	98 ft (30 m)	98 ft (30 m)
LumiSearch / LumiSearch+	LumiSearch+	LumiSearch+	LumiSearch+
LumiAnalytics*	Yes	Yes	Yes
iMD	Yes	Yes	Yes
VCA / VCA+	VCA+	VCA+	VCA+
Audio In/Out	Built-in Microphone, 1 Input/ 1 Output	Built-in Microphone, 1 Input/ 1 Output	Built-in Microphone, 1 Input/ 1 Output
Alarm In/Out	1 Input/1 Output	1 Input/1 Output	1 Input/1 Output
Memory Slot	Max 512 GB	Max 512 GB	Max 512 GB
Protection Rating	IP67	IP67	IP67
Operating Temperature	-40°F to +140°F (-40°C to +60°C)	-40°F to +140°F (-40°C to +60°C)	-40°F to +140°F (-40°C to +60°C)
Power	PoE, 12VDC, LumiPower	PoE, 12VDC, LumiPower	PoE, 12VDC, LumiPower

Definitions:

VCA: Line Crossing and Intrusion

VCA+: Line Crossing, Intrusion, Loitering Detection, and Parking Detection

ACCESS CONTROL

TRANSMISSION

ACCESSORIES

LUMIGUARDIAN

**N5T-4LAV****N5T-8LAV****N5B-4LA2****N5B-8LA2**

Series	N5-L LumiLuxSmart			
Image Sensor	1/1.8-in. CMOS	1/1.8-in. CMOS	1/1.8-in. CMOS	1/1.8-in. CMOS
Max. Resolution	4MP (2688 × 1520)	8MP (3840 × 2160)	4MP (2688 × 1520)	8MP (3840 × 2160)
Focal Length	2.7 mm to 12 mm	2.7 mm to 12 mm	2.8 mm	2.8 mm
Min. Illumination	Color: 0.0006 Lux at F1.2 B/W: 0.0003 Lux at F1.2 0 Lux with Illuminator on	Color: 0.0007 Lux at F1.2 B/W: 0.0004 Lux at F1.2 0 Lux with Illuminator on	Color: 0.0005 Lux at F1.0 B/W: 0.0003 Lux at F1.0 0 Lux with Illuminator on	Color: 0.0005 Lux at F1.0 B/W: 0.0003 Lux at F1.0 0 Lux with Illuminator on
Max. IR Distance	131 ft (40 m)	131 ft (40 m)	98 ft (30 m)	98 ft (30 m)
Max. White-light Distance	131 ft (40 m)	131 ft (40 m)	98 ft (30 m)	98 ft (30 m)
LumiSearch / LumiSearch+	LumiSearch+	LumiSearch+	LumiSearch+	LumiSearch+
LumiAnalytics*	Yes	Yes	Yes	Yes
iMD	Yes	Yes	Yes	Yes
VCA / VCA+	VCA+	VCA+	VCA+	VCA+
Audio In/Out	Built-in Microphone, 1 Input/ 1 Output	Built-in Microphone, 1 Input/ 1 Output	Built-in Microphone, 1 Input/ 1 Output	Built-in Microphone, 1 Input/ 1 Output
Alarm In/Out	1 Input/1 Output	1 Input/1 Output	1 Input/1 Output	1 Input/1 Output
Memory Slot	Max 512 GB	Max 512 GB	Max 512 GB	Max 512 GB
Protection Rating	IP67	IP67	IP67, IK10	IP67, IK10
Operating Temperature	-22°F to +140°F (-30°C to +60°C)	-22°F to +140°F (-30°C to +60°C)	-40°F to +140°F (-40°C to +60°C)	-40°F to +140°F (-40°C to +60°C)
Power	PoE, 12VDC, LumiPower	PoE, 12VDC, LumiPower	PoE, 12VDC, LumiPower	PoE, 12VDC, LumiPower

*Face Detection, People Counting, Queue Management, Heat Map, Smart Object Detection. Features may vary, please refer to the datasheet.

**Parking Detection Not Supported

***Fence Climbing, Abandoned/Missing Object, People Gathering, Vehicle/Human Alarm Classification, Linkage Tracking



N5B-12LA2



N5B-4LAV



N5B-8LAV



N5D-4LA2

Series	N5-L LumiLuxSmart			
Image Sensor	1/2.5-in. CMOS	1/1.8-in. CMOS	1/1.8-in. CMOS	1/1.8-in. CMOS
Max. Resolution	12MP (4512 x 2512)	4MP (2688 × 1520)	8MP (3840 x 2160)	4MP (2688 × 1520)
Focal Length	2.8 mm	2.7 mm to 12 mm	2.7 mm to 12 mm	2.8 mm
Min. Illumination	Color: 0.0085 Lux at F1.6 B/W: 0.0008 Lux at F1.6 0 Lux with Illuminator on	Color: 0.0006 Lux at F1.2 B/W: 0.0003 Lux at F1.2 0 Lux with Illuminator on	Color: 0.0007 Lux at F1.2 B/W: 0.0004 Lux at F1.2 0 Lux with Illuminator on	Color: 0.0008 Lux at F1.4 B/W: 0.0005 Lux at F1.4 0 Lux with Illuminator on
Max. IR Distance	98 ft (30 m)	164 ft (50 m)	164 ft (50 m)	98 ft (30 m)
Max. White-light Distance	98 ft (30 m)	164 ft (50 m)	164 ft (50 m)	98 ft (30 m)
LumiSearch / LumiSearch*	LumiSearch*	LumiSearch*	LumiSearch*	LumiSearch*
LumiAnalytics*	Yes	Yes	Yes	Yes
iMD	Yes	Yes	Yes	Yes
VCA / VCA+	VCA+	VCA+	VCA+	VCA+
Audio In/Out	Built-in Microphone, 1 Input/ 1 Output	Built-in Microphone, 1 Input/ 1 Output	Built-in Microphone, 1 Input/ 1 Output	Built-in Microphone, 1 Input/ 1 Output
Alarm In/Out	1 Input/1 Output	1 Input/1 Output	1 Input/1 Output	1 Input/1 Output
Memory Slot	Max 512 GB	Max 512 GB	Max 512 GB	Max 512 GB
Protection Rating	IP67, IK10	IP67, IK10	IP67, IK10	IP67, IK10
Operating Temperature	-40°F to +140°F (-40°C to +60°C)	-22°F to +140°F (-30°C to +60°C)	-22°F to +140°F (-30°C to +60°C)	-40°F to +140°F (-40°C to +60°C)
Power	PoE, 12VDC, LumiPower	PoE, 12VDC, LumiPower	PoE, 12VDC, LumiPower	PoE, 12VDC, LumiPower

Definitions:

VCA: Line Crossing and Intrusion

VCA+: Line Crossing, Intrusion, Loitering Detection, and Parking Detection

ACCESS CONTROL

TRANSMISSION

ACCESSORIES

LUMIGUARDIAN

**N5D-8LA2****N5D-12LA2****N5D-4LAV****N5D-8LAV**

Series	N5-L LumiLuxSmart			
Image Sensor	1/1.8-in. CMOS	1/2.5-in. CMOS	1/1.8-in. CMOS	1/1.8-in. CMOS
Max. Resolution	8MP (3840 x 2160)	12MP (4512 x 2512)	4MP (2688 x 1520)	8MP (3840 x 2160)
Focal Length	2.8 mm	2.8 mm	2.7 mm to 12 mm	2.7 mm to 12 mm
Min. Illumination	Color: 0.0008 Lux at F1.4 B/W: 0.0005 Lux at F1.4 0 Lux with Illuminator on	Color: 0.0085 Lux at F1.6 B/W: 0.0008 Lux at F1.6 0 Lux with Illuminator on	Color: 0.0006 Lux at F1.2 B/W: 0.0003 Lux at F1.2 0 Lux with Illuminator on	Color: 0.0007 Lux at F1.2 B/W: 0.0004 Lux at F1.2 0 Lux with Illuminator on
Max. IR Distance	98 ft (30 m)	98 ft (30 m)	98 ft (30 m)	98 ft (30 m)
Max. White-light Distance	98 ft (30 m)	98 ft (30 m)	98 ft (30 m)	98 ft (30 m)
LumiSearch / LumiSearch*	LumiSearch+	LumiSearch+	LumiSearch+	LumiSearch+
LumiAnalytics*	Yes	Yes	Yes	Yes
iMD	Yes	Yes	Yes	Yes
VCA / VCA+	VCA+	VCA+	VCA+	VCA+
Audio In/Out	Built-in Microphone, 1 Input/ 1 Output	Built-in Microphone, 1 Input/ 1 Output	Built-in Microphone, 1 Input/ 1 Output	Built-in Microphone, 1 Input/ 1 Output
Alarm In/Out	1 Input/1 Output	1 Input/1 Output	1 Input/1 Output	1 Input/1 Output
Memory Slot	Max 512 GB	Max 512 GB	Max 512 GB	Max 512 GB
Protection Rating	IP67, IK10	IP67, IK10	IP67, IK10	IP67, IK10
Operating Temperature	-40°F to +140°F (-40°C to +60°C)	-40°F to +140°F (-40°C to +60°C)	-40°F to +140°F (-40°C to +60°C)	-22°F to +140°F (-30°C to +60°C)
Power	PoE, 12VDC, LumiPower	PoE, 12VDC, LumiPower	PoE, 12VDC, LumiPower	PoE, 12VDC, LumiPower

*Face Detection, People Counting, Queue Management, Heat Map, Smart Object Detection. Features may vary, please refer to the datasheet.

**Parking Detection Not Supported

***Fence Climbing, Abandoned/Missing Object, People Gathering, Vehicle/Human Alarm Classification, Linkage Tracking



N5T-4CA2



N5T-8CA2



N5B-4CA2



N5B-8CA2

Series	N5-C LumiColor			
Image Sensor	1/1.8-in. CMOS	1/1.8-in. CMOS	1/1.8-in. CMOS	1/1.8-in. CMOS
Max. Resolution	4MP (2688 × 1520)	8MP (3840 × 2160)	4MP (2688 × 1520)	8MP (3840 × 2160)
Focal Length	2.8 mm	2.8 mm	2.8 mm	2.8 mm
Min. Illumination	Color: 0.0005 Lux at F1.0 0 Lux with Illuminator on	Color: 0.0005 Lux at F1.0 0 Lux with Illuminator on	Color: 0.0005 Lux at F1.0 0 Lux with Illuminator on	Color: 0.0005 Lux at F1.0 0 Lux with Illuminator on
Max. IR Distance	N/A	N/A	N/A	N/A
Max. White-light Distance	98 ft (30 m)	98 ft (30 m)	98 ft (30 m)	98 ft (30 m)
LumiSearch / LumiSearch*	LumiSearch	LumiSearch	LumiSearch	LumiSearch
LumiAnalytics*	Yes	Yes	Yes	Yes
iMD	Yes	Yes	Yes	Yes
VCA / VCA+	VCA+	VCA+	VCA+	VCA+
Audio In/Out	Built-in Microphone	Built-in Microphone	Built-in Microphone	Built-in Microphone
Alarm In/Out	No	No	No	No
Memory Slot	Max 512 GB	Max 512 GB	Max 512 GB	Max 512 GB
Protection Rating	IP67	IP67	IP67, IK10	IP67, IK10
Operating Temperature	-40°F to +140°F (-40°C to +60°C)	-40°F to +140°F (-40°C to +60°C)	-40°F to +140°F (-40°C to +60°C)	-40°F to +140°F (-40°C to +60°C)
Power	PoE, 12VDC, LumiPower	PoE, 12VDC, LumiPower	PoE, 12VDC, LumiPower	PoE, 12VDC, LumiPower

*Face Detection, People Counting, Queue Management, Heat Map, Smart Object Detection. Features may vary, please refer to the datasheet.

**Parking Detection Not Supported

***Fence Climbing, Abandoned/Missing Object, People Gathering, Vehicle/Human Alarm Classification, Linkage Tracking

Definitions:

VCA: Line Crossing and Intrusion

VCA+: Line Crossing, Intrusion, Loitering Detection, and Parking Detection

**N9F-12RA1****N9F-8RA1****N9L-4RAL**

Series	N9F Fisheye		N9L LPR
Image Sensor	1/1.7-in. CMOS	1/1.7-in. CMOS	1/1.8-in. CMOS
Max. Resolution	12MP (4000 x 3000)	8MP (3840 x 2160)	4MP (2688 × 1520)
Focal Length	1.85 mm	1.85 mm	10 mm to 50 mm
Min. Illumination	Color: 0.01 Lux at F2.0 B/W: 0.001 Lux at F2.0 0 Lux with Illuminator on	Color: 0.01 Lux at F2.0 B/W: 0.001 Lux at F2.0 0 Lux with Illuminator on	0.002 Lux
Max. IR Distance	33 ft (10 m)	33 ft (10 m)	98 ft (30 m)
Max. White-light Distance	N/A	N/A	N/A
LumiSearch / LumiSearch⁺	No	No	No
LumiAnalytics[*]	Yes	Yes	Vehicle Type, Color, Brand
iMD	No	No	No
VCA / VCA⁺	VCA	VCA	No
Audio In/Out	Built-in Microphone, 1 Input/ 1 Output	Built-in Microphone, 1 Input/ 1 Output	1 Output
Alarm In/Out	2 Inputs/2 Outputs	2 Inputs/2 Outputs	2 Inputs/2 Outputs
Memory Slot	Max 256 GB	Max 256 GB	Max 128 GB
Protection Rating	IP67, IK10	IP67, IK10	IP67, IK10
Operating Temperature	-22°F to +140°F (-30°C to +60°C)	-40°F to +140°F (-40°C to +60°C)	-40°F to +140°F (-40°C to +60°C)
Power	PoE+, 12VDC	PoE+, 12VDC	PoE+, 12VDC

*Face Detection, People Counting, Queue Management, Heat Map, Smart Object Detection. Features may vary, please refer to the datasheet.

**Parking Detection Not Supported

***Fence Climbing, Abandoned/Missing Object, People Gathering, Vehicle/Human Alarm Classification, Linkage Tracking



N9P-8RB2



N9P-18RB3



N9P-4RA2



N9P-20RAV

Series	N9P Multi-sensors			
Image Sensor	1/2.8-in. CMOS	1/2.8-in. CMOS	1/2.7-in. CMOS	1/2.7-in. CMOS
Max. Resolution	8MP (4864x1632)	18MP (6912x2624)	2 x 4MP (2688 × 1520)	4 x 5MP (2592×1944)
Focal Length	2.8 mm	3.5 mm	2.8 mm	2.8 mm -12 mm
Min. Illumination	Color: 0.018 Lux at F1.2 B/W: 0.01 Lux at F1.2 0 Lux With Illumination On	Color: 0.055 Lux at F2.0 B/W: 0.005 Lux at F2.0 0 Lux With Illumination On	B/W: 0.0007 Lux at F1.60 Lux with Illuminator on	Color: 0.005 Lux @ F1.7, B/W: 0.0005 Lux @ F1.7, 0 Lux with illuminator on
Max. IR Distance	66 ft (20 m)	98 ft (30m)	100 ft (30.48 m)	98.43 ft (30 m)
Max. White-light Distance	NA	NA	NA	NA
LumiSearch / LumiSearch+	No	No	No	No
LumiAnalytics*	No	No	No	Face Detection, People Counting
iMD	Yes	Yes	Yes	No
VCA / VCA+	No	No	VCA	VCA+
Audio In/Out	Built-in Microphone	Built-in Microphone, 1 Input/ 1 Output	Built-in Microphone, 1 Input/1 Output	1 Input/1 Output
Alarm In/Out	NA	1 Input/1 Output	1 Input/1 Output	3 Inputs/2 Outputs
Memory Slot	Max 1 TB	Max 1 TB	Max 256 GB	Max 256 GB
Protection Rating	IP66, IK10	IP66, IK10	IP67	IP67, IK10
Operating Temperature	-40°F to +122°F (-40°C to +50°C)	-40°F to +122°F (-40°C to +50°C)	-40°F to +140°F (-40°C to +60°C)	-22°F to +140°F (-30°C to +60°C)
Power	PoE+	PoE+, 24V AC	PoE, 12V DC	PoE+, 12V DC

*Face Detection, People Counting, Queue Management, Heat Map, Smart Object Detection. Features may vary, please refer to the datasheet.

**Parking Detection Not Supported

***Fence Climbing, Abandoned/Missing Object, People Gathering, Vehicle/Human Alarm Classification, Linkage Tracking

**P54-4SA25****P55-4SA45****P5C-4SA32****P45-8RA25**

Series	P5-S LumiSearch			P4
Image Sensor	1/2.8-in. CMOS	1/2.8-in. CMOS	1/2.8-in. CMOS	1/1.8-in. CMOS
Max. Resolution	4MP (2560 x 1440)	4MP (2560 x 1440)	4MP (2560 x 1440)	8MP (3840 x 2160)
Focal Length	25x (5 mm to 125 mm)	45x (4 mm to 178 mm)	32x (4.8 mm to 154 mm)	25x (5 mm to 125 mm)
Min. Illumination	Color: 0.005 Lux at F1.6 B/W: 0.0005 Lux at F1.60 Lux with Illuminator on	Color: 0.005 Lux at F1.6 B/W: 0.0005 Lux at F1.60 Lux with Illuminator on	Color: 0.005 Lux at F1.6 B/W: 0.0005 Lux at F1.60 Lux with Illuminator on	Color: 0.005 Lux at F1.6 B/W: 0.0005 Lux at F1.60 Lux with Illuminator on
Max. IR Distance	328 ft (100 m)	492 ft (150 m)	N/A	492 ft (150 m)
LumiTracking	Yes	Yes	Yes	Yes
LumiSearch / LumiSearch+	LumiSearch	LumiSearch	LumiSearch	No
LumiAnalytics*	Yes	Yes	Yes	Yes
iMD	Yes	Yes	Yes	Yes
VCA / VCA+	VCA+ ***	VCA+ ***	VCA+ ***	VCA+ ***
Audio In/Out	1 Input/1 Output	1 Input/1 Output	1 Input/1 Output	1 Input/1 Output
Alarm In/Out	2 Inputs/2 Outputs	2 Inputs/2 Outputs	2 Inputs/2 Outputs	2 Inputs/1 Output
Memory Slot	Max 512 GB	Max 512 GB	Max 512 GB	Max 512 GB
Protection Rating	IP66	IP67, IK10	IK10	IP67, IK10
Operating Temperature	-40°F to +158°F (-40 °C to 70 °C)	-40°F to +158°F (-40 °C to 70 °C)	-40°F to +140°F (-40°C to +60°C)	-40°F to +158°F (-40 °C to 70 °C)
Power	PoE+, 12VDC	PoE+, 24 VDC	PoE+, 24 VDC	PoE+, 24VDC

Definitions:

VCA: Line Crossing and Intrusion

VCA+: Line Crossing, Intrusion, Loitering Detection, and Parking Detection

*Face Detection, People Counting, Queue Management, Heat Map, Smart Object Detection.

Features may vary, please refer to the datasheet.

**Parking Detection Not Supported

***Fence Climbing, Abandoned/Missing Object, People Gathering, Vehicle/Human Alarm Classification, Linkage Tracking



P54-4DA25



P54-4DB25



P44-8DB25

Series	P5-D LumiDeterrent		
Image Sensor	Panoramic: 1/2.7-in. CMOS PTZ: 1/2.8-in. CMOS	1/2.8-in. CMOS	1/2.8-in. CMOS
Max. Resolution	Panoramic: 8MP (4096 x 1860) PTZ: 4MP (2560 x 1440)	4MP (2560 x 1440)	8MP (3840 x 2160)
Focal Length	Panoramic: 2.8mmPTZ:25x(5 mm to 125 mm)	25x (5 mm to 125 mm)	25x (5 mm to 125 mm)
Min. Illumination	Panorama:Color: 0.005 lux at F1.4, B/W: 0.0005 lux at F1.40, lux with illuminator on, Detail:Color: 0.005 lux at F1.6, B/W: 0.0005 lux at F1.60, lux with illuminator on	Color: 0.006 Lux at F1.6 B/W: 0.0006 Lux at F1.60 Lux with illuminators on	Color: 0.006 Lux at F1.6 B/W: 0.0006 Lux at F1.60 Lux with illuminators on
Max. IR Distance	Panorama: 98 ft (30 m)PTZ: 328 ft (100 m)	330 ft (100m)	330 ft (100m)
LumiTracking	Yes	Yes	Yes
LumiSearch / LumiSearch+	No	LumiSearch	No
LumiAnalytics*	No	Yes	Yes
iMD	Yes	Yes	Yes
VCA / VCA+	VCA+ ***	VCA+ ***	VCA+ ***
Audio In/Out	1 Input/1 Output	1 Input/1 Output	1 Input/1 Output
Alarm In/Out	2 Inputs/1 Output	2 Inputs/1 Output	2 Inputs/1 Output
Memory Slot	Max 512 GB	Max 512 GB	Max 512 GB
Protection Rating	IP66	IP66	IP66
Operating Temperature	-40 °F to +149 °F (-40 °C to +65°C)	-40°F to 140°F (-40°C to 60°C)	-40°F to 140°F (-40°C to 60°C)
Power	PoE+, 12VDC	PoE+, 12VDC	PoE+, 12VDC

ACCESS CONTROL

TRANSMISSION

ACCESSORIES

LUMIGUARDIAN



P22-4TA4
(coming soon)



P32-4NA16D
(coming soon)


Series	P2-T Moonbeam	P3-N LumiNightKing
Image Sensor	1/2.8-in. CMOS	1/1.8-in. CMOS
Max. Resolution	4MP (2560 x 1440)	4MP (2688 x 1520)
Focal Length	4x (2.8mm to 12mm)	Fixed (3.6mm) 16x (Digital Zoom)
Min. Illumination	Color: 0.006 lux at F1.6 B/W: 0.0006 lux at F1.6	Color: 0.0006 lux at F1.0 0 Lux with Illuminator on
Max. IR Distance	N/A	98 ft (30 m)
LumiTracking	No	Yes (Human Only)
LumiSearch / LumiSearch+	No	No
LumiAnalytics*	Yes	No
iMD	Yes	Yes
VCA / VCA+	VCA+ ***	VCA
Audio In/Out	N/A	Built-in Microphone Built-in Speaker
Alarm In/Out	N/A	N/A
Memory Slot	Max 512 GB	Max 512 GB
Protection Rating	IP66, IK10	IP66
Operating Temperature	-22 °F to +140 °F (-30 °C to +60 °C)	-22 °F to +131 °F (-30 °C to +55°C)
Power	PoE, 12 VDC	PoE, 12 VDC

04

Network Video Recorder



**R31-4PA****R31-8PA****R32-8PA****R32-16PA**

Series	R3 Starter Series NVRs			
Key Features	4CH 4K PoE NVR Camera-Side Analytics	8CH 4K PoE NVR Camera-Side Analytics	8CH 4K PoE NVR Camera-Side Analytics	16CH 4K PoE NVR Camera-Side Analytics
Video Compression	H.265, H.264, MJPEG	H.265, H.264, MJPEG	H.265, H.264, MJPEG	H.265, H.264, MJPEG
IP Video Inputs	4CH	8CH	8CH	16CH
Max Input/ Record Bandwidth	80 Mbps	80 Mbps	160 Mbps	160 Mbps
Display Output	HDMI (4K Max), VGA (1080p Max)	HDMI (4K Max), VGA (1080p Max)	HDMI (4K Max), VGA (1080p Max)	HDMI (4K Max), VGA (1080p Max)
Maximum HDD Capacity	Supports up to 10TB total (1 x 10TB per drive)	Supports up to 10TB total (1 x 10TB per drive)	Supports up to 20TB total (2 x 10TB per drive)	Supports up to 20TB total (2 x 10TB per drive)
eSATA/Mini SAS	-	-	-	-
Audio In/Out	1/1	1/1	1/1	1/1
Alarm In/Out	-	-	4/2	4/2
Ethernet Port	1 Gigabit Port	1 Gigabit Port	1 Gigabit Port	1 Gigabit Port
PoE Port	4 PoE Ports	8 PoE Ports	8 PoE Ports	16 PoE Ports
Dimensions	10.2 × 9.2 × 1.8 in.	10.2 × 9.2 × 1.8 in.	14.7 × 12.8 × 1.7 in.	14.7 × 12.8 × 1.7 in.
Power	48–53 VDC, 36 W Max PoE	48–53 VDC, 36 W Max PoE	100–240 V, 115 W Max PoE	100–240 V, 115 W Max PoE
LumiCloud				



R42-8PA



R42-16PA

Series	R4 Mainstream Series NVRs	
Key Features	8CH 16MP Analytics PoE NVR	16CH 16MP Analytics PoE NVR
Video Compression	H.265; H.264; MJPEG	H.265; H.264; MJPEG
IP Video Inputs	8 CH	16 CH
Max Input/Record Bandwidth	256Mbps	256Mbps
Display Output	HDMI(4K Max),VGA(1080p Max)	HDMI(4K Max),VGA(1080p Max)
Maximum HDD Capacity	Supports up to 32TB total (2 x 16TB per drive)	Supports up to 32TB total (2 x 16TB per drive)
eSATA/Mini SAS	-	-
Audio In/Out	1/1	1/1
Alarm In/Out	4/2	4/2
Ethernet Port	1 Gigabit Port	1 Gigabit Port
PoE Port	8 PoE Ports	16 PoE Ports
Dimensions	14.7 × 12.8 × 1.7 in.	14.7 × 12.8 × 1.7 in.
Power	100-240 VAC,130 W Max PoE	100-240 VAC,130 W Max PoE
System Enhancement	Adds LumiSmart Analytics Dual SATA for extended storage	Adds LumiSmart Analytics Dual SATA for extended storage

ACCESS CONTROL

TRANSMISSION

ACCESSORIES

LUMIGUARDIAN

**R52-8PA****R52-16PA****R54-32PA****R54-32NA**

Series	R5 Mainstream Series NVRs			
Key Features	8CH 8K LumiSearch NVR LumiPower	16CH 8K LumiSearch NVR LumiPower	32CH 8K LumiSearch NVR LumiPower	32CH 8K LumiSearch NVR
Video Compression	H.265, H.264, MJPEG	H.265, H.264, MJPEG	H.265, H.264, MJPEG	H.265, H.264, MJPEG
IP Video Inputs	8CH	16CH	32CH	32CH
Max Input/Record Bandwidth	256 Mbps	400 Mbps	400 Mbps	400 Mbps
Display Output	HDMI (4K Max), VGA (1080p Max)	HDMI (4K Max), VGA (1080p Max)	HDMI (4K Max), VGA (1080p Max)	HDMI (4K Max), VGA (1080p Max)
Maximum HDD Capacity	Supports up to 32TB total (2 x 16TB per drive)	Supports up to 32TB total (2 x 16TB per drive)	Supports up to 64TB total (4 x 16TB per drive)	Supports up to 64TB total (4 x 16TB per drive)
eSATA/Mini SAS	-	-	1 eSATA Port	1 eSATA Port
Audio In/Out	1/1	1/1	1/2	1/2
Alarm In/Out	4/2	4/2	16/6	16/6
Ethernet Port	1 Gigabit Port	1 Gigabit Port	1 Gigabit Port	2 Gigabit Ports
PoE Port	8 PoE Ports (Enhanced on Ports 1-8 for LumiPower-enabled cameras)	16 PoE Ports (Enhanced on Ports 1-8 for LumiPower-enabled cameras)	24 PoE Ports (Enhanced on Ports 1-8 for LumiPower-enabled cameras)	-
Dimensions	14.7 × 12.8 × 1.7 in.	14.7 × 12.8 × 1.7 in.	17.4 × 16.3 × 2.7 in.	17.4 × 16.3 × 2.7 in.
Power	100-240 V, 130 W Max PoE	100-240 V, 130 W Max PoE	100-240 V, 210 W Max PoE	100-240 V, <13W
LumiCloud				



R68-32NA



R68-64NA



R68-XNA

Series	R6 Extreme Series NVRs		
Key Features	32CH 8K LumiSearch NVR LumiAnalytics by Recorder	64CH 8K LumiSearch NVR LumiAnalytics by Recorder	128CH 8K LumiSearch NVR LumiAnalytics by Recorder
Video Compression	H.265, H.264, MJPEG	H.265, H.264, MJPEG	H.265, H.264, MJPEG
IP Video Inputs	32CH	64CH	128CH
Max Input/ Record Bandwidth	1400 Mbps (TBD)	1400 Mbps (TBD)	1400 Mbps (TBD)
Display Output	HDMI (8K Max), VGA (1080p Max)	HDMI (8K Max), VGA (1080p Max)	HDMI (8K Max), VGA (1080p Max)
Maximum HDD Capacity	Supports up to 160TB total (8 x 20TB per drive)	Supports up to 160TB total (8 x 20TB per drive)	Supports up to 128TB total (8 x 16TB per drive)
eSATA/Mini SAS	1 eSATA Port	1 eSATA Port	1 eSATA Port
Audio In/Out	1/2	1/2	1/2
Alarm In/Out	16/8	16/8	16/8
Ethernet Port	2 x 2.5 Gigabit Ports	2 x 2.5 Gigabit Ports	2 x 2.5 Gigabit Ports
PoE Port	-	-	-
Dimensions	17.5 × 18.7 × 3.74 in.	17.5 × 18.7 × 3.74 in.	17.5 × 18.7 × 3.74 in.
Power	100–240 VAC, 50/60 Hz	100–240 VAC, 50/60 Hz	100–240 VAC, 50/60 Hz
System Enhancement	Perfect for large projects R6 Series models include LumiSearch and LumiAnalytics technology and other features such as Dual NIC and RAID	Perfect for large projects R6 Series models include LumiSearch and LumiAnalytics technology and other features such as Dual NIC and RAID	Perfect for large projects R6 Series models include LumiSearch and LumiAnalytics technology and other features such as Dual NIC and RAID

ACCESS CONTROL

TRANSMISSION

ACCESSORIES

LUMIGUARDIAN



K54-4L1A2



K56-8L1A2



K5T-16L2A4

Series	LumiLuxLite 5MP Network Kits		
Included NVR	R31-4PA2	R31-8PA2	R32-16PA4
Included Cameras	N3T-5KA2	N3T-5KA2	N3T-5KA2
Number of Cameras	4	6	12
Camera Resolution (Kit Cameras)	5MP	5MP	5MP
Camera Illumination Type	LumiLuxLite	LumiLuxLite	LumiLuxLite
Lens	2.8 mm Fixed	2.8 mm Fixed	2.8 mm Fixed
NVR Channels	4	8	16
Preinstalled Storage (Surveillance HDD)	2TB	2TB	4TB
PoE Ports	4	8	16
Supported Camera Analytics on NVR	iMD	iMD	iMD
Camera Audio (Built-in Mic & Speaker)	Built-in Mic & Speaker	Built-in Mic & Speaker	Built-in Mic & Speaker
Camera Protection Rating(IP)	IP66	IP66	IP66
Camera Operating Temperature	-22°F to +140°F (-30 °C to 60 °C)	-22°F to +140°F (-30 °C to 60 °C)	-22°F to +140°F (-30 °C to 60 °C)
NVR Power Supply	48VDC / 2A	48VDC / 2A	100-240V AC
NVR Max Bandwidth	80 Mbps	80 Mbps	160 Mbps
LumiCloud			

LUMICLOUD

LUMICENTER

NETWORK CAMERA



NETWORK VIDEO
RECORDER



K86-8B2A4

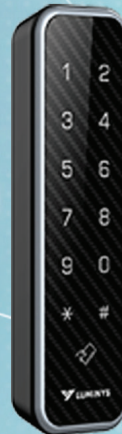
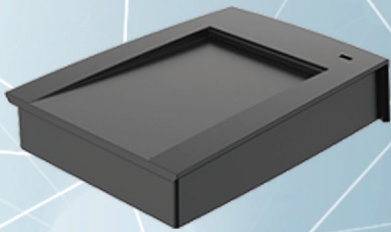


K8T-16B2A4

Series	LumiLightBand 8MP Network Kits	
Included NVR	R32-8PA4	R32-16PA4
Included Cameras	N3T-8BA2	N3T-8BA2
Number of Cameras	6	12
Camera Resolution (Kit Cameras)	8MP	8MP
Camera Illumination Type	LumiLightBand	LumiLightBand
Lens	2.8 mm Fixed	2.8 mm Fixed
NVR Channels	8	16
Preinstalled Storage (Surveillance HDD)	4TB	4TB
PoE Ports	8	16
Supported Camera Analytics on NVR	iMD and VCA (Line Cross, Intrusion)	iMD and VCA (Line Cross, Intrusion)
Camera Audio (Built-in Mic & Speaker)	Built-in Mic & Speaker	Built-in Mic & Speaker
Camera Protection Rating(IP)	IP66	IP66
Camera Operating Temperature	-22°F to +140°F (-30 °C to 60 °C)	-22°F to +140°F (-30 °C to 60 °C)
NVR Power Supply	100-240V AC	100-240V AC
NVR Max Bandwidth	160 Mbps	160 Mbps
LumiCloud		

05

Access Control





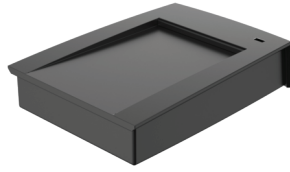
C-2PA

C-F4A
(coming soon)

Series	Web Access Controller	Facial Recognition Terminal
Doors Managed	Up to 30 (with sub-controllers)	1 Door
User Capacity	1,000 users	6,000 users
Card Capacity	5,000 cards	10,000 cards
Bluetooth Capacity	5,000 Bluetooth cards	NA
Record Capacity	300,000 events	300,000 events
Verification Methods	Card, Password, Bluetooth, Fingerprint	Card, Password, Face
Protection Level	IK06	IP65
Communication Protocols	RS-485, Wiegand, TCP/IP	RS-485, Wiegand, TCP/IP
PoE Support	Yes (Standard PoE)	Yes (Standard PoE)
Power Supply	12V DC/PoE	12V DC/PoE
Built-In Server	Yes, Web-Centric Configuration	Yes, Web-Centric Configuration
Alarm Input/Output	2 Input, 2 Output	1 Input, 1 Output
Real-Time Monitoring	Supported via LumiViewer app and LumiCloud	Supported via LumiViewer app
Operating Environment	Indoor	Indoor and Outdoor
Dimensions	7.34 x 7.31 x 2.30 in.	7.09" x 3.55" x 1.06"
Mounting	Surface / Guide Rail Mount	86 mm Junction Box Mount, Surface Mount, Wall Mount
LumiCloud		

**RD1PM****RD1BN****RD1PN****RD1CW**

Series	Vandal-proof Access Reader	Bluetooth Access Reader	Mullion Keypad Access Reader	Waterproof Access Reader
Card Type	Mifare (IC Card)	Mifare (IC Card), Bluetooth	Mifare (IC Card)	Mifare (IC Card)
Bluetooth Support	No	Yes (BR/EDR/BLE Bluetooth)	No	No
Verification Methods	Card, Password	Bluetooth, Card	Card, Password	Card
Protection Level	IK08	IP66	IP66	IP66
Communication Protocols	RS-485, Wiegand	RS-485, Wiegand, Bluetooth	RS-485, Wiegand	RS-485, Wiegand
Card Reading Distance	0–1.18 inches	0–1.97 inches	0–1.97 inches	0–1.97 inches
Bluetooth Range	N/A	Short 1 ft, Mid 7 ft, Long 33 ft	N/A	N/A
Mullion Mountable	No	Yes	Yes	No
Operating Temperature	14°F to 131°F	-22°F to 158°F	-22°F to 158°F	-22°F to 158°F
Operating Environment	Indoor	Indoor/Outdoor	Indoor/Outdoor	Indoor/Outdoor
Dimensions	4.33 x 3.35 x 1.02 in.	5.31 x 1.57 x 0.59 in.	5.31 x 1.57 x 0.59 in.	4.84 x 3.82 x 0.59 in.



ED1CU



E-CS50



E-FS50

Series	Access Control Accessories		
Product Type	Card Issuer	Mifare NFC IC Card	Mifare NFC IC Key Fob
Model	ED1CU	E-CS50	E-FS50
Standard	MIFARE	MIFARE	MIFARE
Card Reading Frequency	13.56 MHz	13.56 MHz	13.56 MHz
Connection Type	USB 2.0 (Plug & Play)	N/A	N/A
Range	N/A	3.94 in. (10 cm)	3.94 in. (10 cm)
Operating Temperature	-22°F to 140°F	N/A	N/A
Operating Environment	Indoor	Indoor/Outdoor Use	Indoor/Outdoor Use
Dimensions	4.13" x 2.95" x 0.79"	3.39" x 2.13" x 0.03"	1.4 x 1.1 x 0.2 in.
Material	ABS Plastic	PVC	ABS Plastic
Packaging	1 Unit	20 Cards per Bag (for E-CS50) / 20 Key Fobs per Bag (for E-FS50)	20 pcs per bag

06 Transmission





SML-6GPA

SML-10GPA

SML-20GPA

SML-28GPA

Description	4-Port PoE+ Gigabit Managed Cloud Switch	8-Port PoE++ Gigabit Managed Cloud Switch	16-Port PoE++ Gigabit Managed Cloud Switch	24-Port PoE++ Gigabit Managed Cloud Switch
Port Configuration	4 PoE Ports + 2 RJ45 Uplink Ports	8 PoE Ports + 2 RJ45 Uplink Ports	16 PoE Ports + 4 Uplink Ports (2 SFP, 2 RJ-45)	24 PoE Ports + 4 Uplink Ports (2 SFP, 2 RJ-45)
SFP Optical Ports	-	-	2 x 100/1000 Mbps	2 x 100/1000 Mbps
PoE Standard	IEEE802.3af, IEEE802.3at (PoE+)	IEEE802.3af, IEEE802.3at (PoE+), IEEE802.3bt (PoE++)	IEEE802.3af, IEEE802.3at (PoE+), IEEE802.3bt (PoE++)	IEEE802.3af, IEEE802.3at (PoE+), IEEE802.3bt (PoE++)
PoE Budget	60 W	110 W	240 W	375 W
Switching Capacity	12 Gbps	20 Gbps	40 Gbps	56 Gbps
Packet Forwarding Rate	8.9 Mpps	14.8 Mpps	29.8 Mpps	42 Mpps
Packet Buffer Size	4.1 Mbit	4.1 Mbit	4.1 Mbit	4.1 Mbit
MAC Table Size	8,000	8,000	8,000	8,000
VLAN Number	32	32	32	32
Management	Web/Cloud-Based	Web/Cloud-Based	Web/Cloud-Based	Web/Cloud-Based
Lightning Protection	4 kV/2 kV	4 kV/2 kV	4 kV/2 kV	4 kV/2 kV
Operating Temperature	14°F to 131 °F	14 °F to 131 °F	14 °F to 131 °F	14 °F to 131 °F
Dimensions	5.1 × 3.5 × 1.0 in.	7.5 × 4.2 × 1.2 in.	17.3 × 8.7 × 1.7 in.	17.3 × 8.7 × 1.7 in.
LumiPoE	PoE Watchdog, Long Distance PoE, Perpetual PoE, PoE Priority Management			
LumiCloud				

When long-distance PoE is enabled, port speed is limited to 10Mbps.



	SUL-10MLA
Description	8-Port LumiPower Unmanaged Megabit Switch (PoE++)
Port Configuration	8 PoE Ports + 2 Uplink Ports (1 SFP, 1 RJ-45)
SFP Optical Ports	1 x 100/1000 Mbps
PoE Standard	IEEE802.3af IEEE802.3at IEEE802.3bt (PoE++)
PoE Budget	120 W
Switching Capacity	8.8 Gbps
Packet Forwarding Rate	5.4 Mpps
Packet Buffer Size	2.8 Mbit
MAC Table Size	8,000
VLAN Number	/
Management	/
Lightning Protection	4 kV/2 kV
Operating Temperature	-22 °F to 149 °F
Dimensions	6.3 in. × 4.4 in. × 1.7 in. (159.8 mm × 110.4 mm × 42.0 mm)
LumiPower  LumiPower	Supported
LumiCloud  LumiCloud	NA

07

Accessories



MODEL**S-1515A**

IP Speaker

- Power Consumption 15w

- Max Sound Pressure Level: 108db,

Snr \geq 75db

- Built-In Microphone

- Maximum Connection Distance Up To 100 Meters (328ft)

- Aviation Aluminum Material

Pole & Corner Mounts**Accessory Image****Part Number****Description**

N3/N5-P01

Pole Mount Bracket



P01

Pole Mount Bracket for N3/N5/N9/P4/P5 Series Cameras



C01

Corner Mount Bracket

Wall Mount Brackets**Accessory Image****Part Number****Description**

N5D/N5T/N3T-W01

Wall Mount Bracket for N5D/N5T/N3T Cameras



N5D/N5T/N3T/P45/P5-W01

Wall Mount Bracket for N5D/N5T/N3T/P45/P54/P55 Cameras



P44-W01

Wall Mount Bracket for P44 PTZ

Wall Mount Brackets

Accessory Image

Part Number

Description



N3W-W01

Wall Mount Bracket for Wedge Dome Cameras



N5T/N5P-W01

Wall Mount Bracket for N5T/N5P Cameras



N9F-W01

Wall Mount Bracket for N9F Cameras



N5T/N5P-W01B

Black Wall Mount Bracket for N5T/N5P Cameras



P54-W01

Wall Mount Bracket for P54 PTZ



N9P-W01

Wall Mount for N9 Specialty Stitched Multi-Sensor Camera

Ceiling Mounts

Accessory Image

Part Number

Description



N5D/N5T/N3T/N5P-E01

Ceiling Mount Bracket for N5D/N5T/N3T/N5P Cameras



N9F/P4/P5-E01

Ceiling Mount Bracket for N9F/P44/P45/P54/P55 Cameras



N5D-M01

In-ceiling Mount Bracket for N5D Dome



N9P-E01

Wall and Ceiling Mount Bracket for N9P-4RA2

Junction Boxes

Accessory Image

Part Number

Description



N5B-J01

Junction Box for N5B Cameras



N5D/N5T/N3T-J01

Junction Box for N5D/N5T/N3T Cameras



N3W-J01

Junction Box for N3W-4LA2



N3T-J02

Junction Box for N3T-5KA2



N2D/N2T-J01

Waterproof Junction Box for N2 Cameras



N2D/N2T/N2B-J01

Waterproof Junction Box for N2 Cameras



N2D/N2T-W01

L-Shape Junction Box for N2 Cameras



N9F-J01

Junction Box for N9F Cameras



N5T/N5P-J01

Junction Box for N5T/N5P Cameras



N5T/N5P-J01B

Black Junction Box for N5T/N5P Cameras







LUMICLOUD

LUMICENTER






NETWORK CAMERA

NETWORK VIDEO
RECORDER

Adapter

Accessory Image	Part Number	Description
	N5D/N5T/N3T-A01	Adapter Plate for N5D/N5T/N3T Cameras
	N5T/N5P-A02	Adapter Plate for N5T/N5P Cameras
	N9F-A01	Adapter Plate for N9F Cameras
	P44-A01	Adapter Plate for P44 PTZ
	P45/P54/P55-A01	Mount Adapter for N5D/N5T/N3T Cameras
	N3W-A01	Adapter Plate for Wedge Dome

Power & Other Accessories

Accessory Image	Part Number	Description
	P55/P54/P45-D01	Power Box for P55/P54/P45 Series PTZ
	N5B-A01	Water Joint for N5B Junction Box
	N5D-B01	Smoked Replacement Bubble (3.4") – Compatible with Dome Housing Style 1
	P44-B01	Smoked Replacement Bubble (5.2") – Compatible with PTZ Housing Style 2
	P55-B01	Smoked Replacement Bubble (5.5") – For P5C-4SA32 PTZ Housing

Additional Catalog Notes

Looking for Compatibility?
Use our Online Selector Tool to find the right accessories for your system.
Visit: <https://www.luminyscorp.com/products/accessories>

LUMICLOUD

LUMICENTER

NETWORK CAMERA

NETWORK VIDEO
RECORDER



08

LumiGuardian

LumiGuardian Solar Trailer Overview

LUMICLOUD

LUMICENTER

NETWORK CAMERA

NETWORK VIDEO
RECORDER

LumiGuardian Solar Trailer Overview

- ✓ Integrated Cloud-Based Recording with LumiCloud*
- ✓ One Year LumiCloud Subscription License
- ✓ One Month Subscription of 4G Data 100GB
- ✓ GPS Tracking**
- ✓ 4G LTE communication with built-in eSIM card***
- ✓ Autonomous Power for 7 to 10 Days Without Sun****
- ✓ One-Person Fast Assembly
- ✓ Four (4) 12.8V Lithium Iron Phosphate Batteries
- ✓ Dual Charging: Solar Power or AC Charging
- ✓ Lockable and Secure Design
- ✓ C5-I Corrosion Protection
- ✓ Level 12 (Up to 73 mph) on the Beaufort Wind Scale
- ✓ IP67 Ingress Protection
- ✓ Department of Transportation (DoT) Approved
- ✓ NDAA Compliant

Remote monitoring and management platform for LumiGuardian:



Real-time Monitoring



Event-based Video Recording



System and Device Health Monitoring



Alerts and Notifications



Data and Reporting

Trailer

Three (3) Years

Solar Panels

Thirty (30) Years

* LumiCloud platform for cloud-based recording is sold separate.

** GPS tracking is only available when using LumiCloud.

***Data plan sold separately.

****Time may vary based on energy consumption.

LumiGuardian (Model TG-113A)

LumiCloud Solar Trailer License (LCL-ST4)

Select the data package that works for your needs. Sold separately.



Features		Trailer License
SKU		LCL-ST4
License & Subscription	Subscription Length	1 Year
General Function	Secure Remote Connection	Y
	Device Registration via QR	Y
	LiveView	Y
	Playback from local storage	Y
	Device management	Y
	Solar Information	Y
Interactive Management & Monitoring	Site Map	Y
	Channel configuration	Y
Cloud Storage	Event cloud storage	Y
	Permanent Archive (Max 30 GB)	Y
Event and Alert	Event record on local storage	Y
	Event cross platform Alert	Y
	iMD Event	Y
	VCA Event	Y
User Function	User control	Y
	Video/Event Sharing	Y
System Function	Device online Status	Y
	OTA firmware	Y
	Software upgrade	Y
	Health Alerts	Y

ACCESS CONTROL

TRANSMISSION

ACCESSORIES

LUMIGUARDIAN

LumiCloud Data Packages

LumiCloud Cellular Data Subscription

Supports AT&T, Verizon and T-Mobile cellular networks in USA.

Supports Rogers, Bell and Telus cellular networks in Canada.

POWERED BY

LumiCloud



Description	SKU	Production site
LumiCloud 4G Data 10GB USA: 1 month	LCL-DATA10GU	USA
LumiCloud 4G Data 100GB USA: 1 month	LCL-DATA100GU	USA
LumiCloud 4G Data 200GB USA: 1 month	LCL-DATA200GU	USA
LumiCloud 4G Data 100GB USA: 6 months	LCL-6DATA100GU	USA
LumiCloud 4G Data 200GB USA: 6 months	LCL-6DATA200GU	USA
LumiCloud 4G Data 100GB USA: 12 months	LCL-12DATA100GU	USA
LumiCloud 4G Data 200GB USA: 12 months	LCL-12DATA200GU	USA
LumiCloud 4G Data 10GB Canada: 1 month	LCL-DATA10GC	Canada
LumiCloud 4G Data 100GB Canada: 1 month	LCL-DATA100GC	Canada
LumiCloud 4G Data 200GB Canada: 1 month	LCL-DATA200GC	Canada
LumiCloud 4G Data 100GB Canada: 6 months	LCL-6DATA100GC	Canada
LumiCloud 4G Data 200GB Canada: 6 months	LCL-6DATA200GC	Canada
LumiCloud 4G Data 100GB Canada: 12 months	LCL-12DATA100GC	Canada
LumiCloud 4G Data 200GB Canada: 12 months	LCL-12DATA200GC	Canada

LumiCloud Features

- Secure Remote Connection
- Add Device via QR Code
- User Roles
- Remote Monitoring & Live Status
- Simplified Configuration Processes
- Comprehensive Reports
- Real-time Network Health Monitoring
- AI Notifications for Events
- Live & Recorded video Playback
- GPS Location & Mapping

Luminys Systems Corporation

Luminys Systems Corporation leads the way in helping businesses build smart, sustainable, and secure ecosystems with integrity. Connected solutions and services offer safety, insight, intelligence, and operational efficiency.

With a focus on ingenuity and exceptional customer support, Luminys delivers future-ready products that adapt to the evolving needs of various industries. As a U.S.-based subsidiary of Foxlink, a global leader in electronics manufacturing, Luminys is trusted by customers and partners worldwide to deliver advanced technology solutions and services shaping a sustainable, smarter future.

Distributed by:

Contact

Tel: (949) 679-7777

Address: 15245 Alton Pkwy, Irvine, CA 92618

Email: sales@luminyscorp.com

Website: <https://www.luminyscorp.com/>



Scan the QR code to join our Luminys MVP Program and unlock exclusive benefits, including special pricing, extended warranties, and priority support. Don't miss out on enhancing your business with our premium solutions.